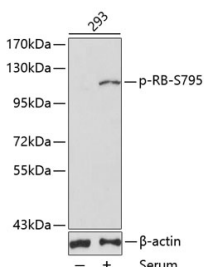


## Anti-Rb (phospho Ser795) Antibody (A16439)

### Specifications:

Name:	Anti-Rb (phospho Ser795) Antibody
Description:	Rabbit polyclonal antibody to Rb (phospho Ser795).
Applications:	WB, IHC
Recommended Dilutions:	WB: 1:500-1:1,000, IHC: 1:50-1:200
Reactivity:	Human, Mouse, Rat
Immunogen:	A synthetic phosphorylated peptide around S795 of human RB (NP_000312.2).
Sequence:	PSSPL
Host:	Rabbit
Clonality:	Polyclonal
Isotype:	IgG
Conjugate:	Unconjugated
Purification:	Affinity purification.
Molecular Weight:	106 kDa
Product Form:	Liquid
Formulation:	Supplied in Phosphate Buffered Saline, pH 7.3, with 50% Glycerol and 0.02% Sodium Azide.
Storage:	Shipped at 4°C. Upon delivery aliquot and store at -20°C. Avoid freeze / thaw cycles.
Disclaimer:	This product is for research use only. It is not intended for diagnostic or therapeutic use.

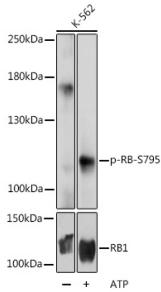
### Images:



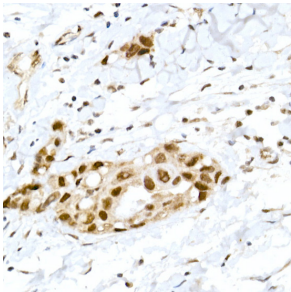
Western blot analysis of extracts of 293 cell line, using Anti-Rb (phospho Ser795) Antibody (A16439). The secondary antibody was Goat Anti-Rabbit IgG H&L Antibody (HRP) at 1:10,000 dilution. Lysates/proteins were present at 25µg per lane. The blocking buffer used was 3% BSA.

## Anti-Rb (phospho Ser795) Antibody (A16439)

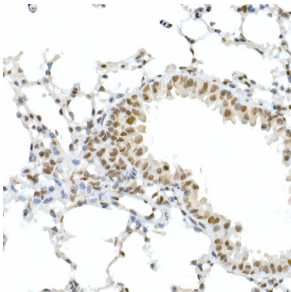
Images continued:



Western blot analysis of extracts of K-562 cells, using Anti-Rb (phospho Ser795) Antibody (A16439) at 1:1,000 dilution or RB1 antibody (A16966). K-562 cells were treated by ATP (5 mM) at 30°C for 1 hour. The secondary antibody was Goat Anti-Rabbit IgG H&L Antibody (HRP) at 1:10,000 dilution. Lysates/proteins were present at 25µg per lane. The blocking buffer used was 3% BSA. Detection was with a ECL Basic Kit. Exposure time: 1s.



Immunohistochemistry analysis of paraffin-embedded human breast cancer tissue using Anti-Rb (phospho Ser795) Antibody (A16439) at a dilution of 1:50 (40x lens). Perform high pressure antigen retrieval with 10 mM citrate buffer pH 6.0 before commencing with IHC staining protocol.



Immunohistochemistry analysis of paraffin-embedded mouse lung using Anti-Rb (phospho Ser795) Antibody (A16439) at a dilution of 1:50 (40x lens). Perform high pressure antigen retrieval with 10 mM citrate buffer pH 6.0 before commencing with IHC staining protocol.