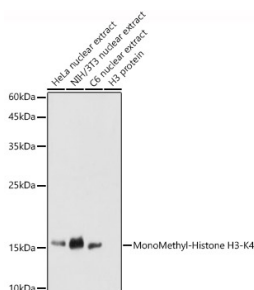


Anti-Histone H3 (mono methyl Lys4) Antibody (A16703)

Specifications:

Name:	Anti-Histone H3 (mono methyl Lys4) Antibody
Description:	Rabbit polyclonal antibody to Histone H3 (mono methyl Lys4).
Applications:	WB, IHC, ICC/IF, IP, ChIP, ChIP-seq
Recommended Dilutions:	WB: 1:500-1:1,000, IHC: 1:50-1:200, ICC/IF: 1:50-1:200, IP: 1:50-1:200, ChIP: 1:20-1:100, ChIP-seq: 1:20-1:100
Reactivity:	Human, Mouse, Rat
Immunogen:	A synthetic monomethylated peptide around K4 of human histone H3 (NP_003520.1).
Sequence:	RTKQT
Host:	Rabbit
Clonality:	Polyclonal
Isotype:	IgG
Conjugate:	Unconjugated
Purification:	Affinity purification.
Molecular Weight:	17 kDa
Product Form:	Liquid
Formulation:	Supplied in Phosphate Buffered Saline, pH 7.3, with 50% Glycerol and 0.01% Thiomersal.
Storage:	Shipped at 4°C. Upon delivery aliquot and store at -20°C. Avoid freeze / thaw cycles.
Disclaimer:	This product is for research use only. It is not intended for diagnostic or therapeutic use.

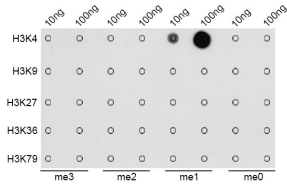
Images:



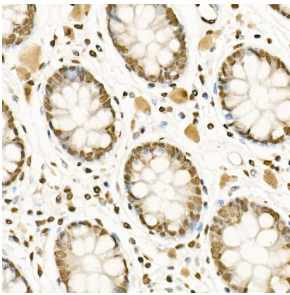
Western blot analysis of extracts of various cell lines, using Anti-Histone H3 (mono methyl Lys4) Antibody (A16703) at 1:1,000 dilution. The secondary antibody was Goat Anti-Rabbit IgG H&L Antibody (HRP) at 1:10,000 dilution. Lysates/proteins were present at 25µg per lane. The blocking buffer used was 3% non-fat dry milk in TBST. Detection was with a ECL Basic Kit. Exposure time: 5s.

Anti-Histone H3 (mono methyl Lys4) Antibody (A16703)

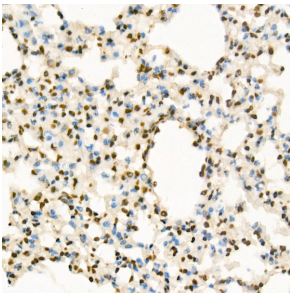
Images continued:



Dot blot analysis of a mixture of methylation peptides using Anti-Histone H3 (mono methyl Lys4) Antibody (A16703).



Immunohistochemistry analysis of paraffin-embedded human colon tissue using Anti-Histone H3 (mono methyl Lys4) Antibody (A16703) at a dilution of 1:20 (40x lens). Perform high pressure antigen retrieval with 10 mM citrate buffer pH 6.0 before commencing with IHC staining protocol.



Immunohistochemistry analysis of paraffin-embedded mouse lung using Anti-Histone H3 (mono methyl Lys4) Antibody (A16703) at a dilution of 1:20 (40x lens). Perform high pressure antigen retrieval with 10 mM citrate buffer pH 6.0 before commencing with IHC staining protocol.