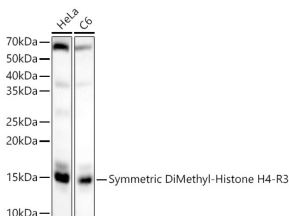


Anti-Histone H4 (di methyl Arg3) Antibody (A16733)

Specifications:

Name:	Anti-Histone H4 (di methyl Arg3) Antibody
Description:	Rabbit polyclonal antibody to Histone H4 (di methyl Arg3).
Applications:	IHC, ICC/IF, Dot Blot
Recommended Dilutions:	DB: 1:500-1:2,000, IHC: 1:50-1:200, ICC/IF: 1:50-1:200
Reactivity:	Human, Mouse, Rat
Immunogen:	A synthetic symmetric dimethylated peptide around R3 of human Histone H4 (NP_003529.1).
Sequence:	SGRGK
Host:	Rabbit
Clonality:	Polyclonal
Isotype:	IgG
Conjugate:	Unconjugated
Purification:	Affinity purification.
Molecular Weight:	11 kDa
Product Form:	Liquid
Formulation:	Supplied in Phosphate Buffered Saline, pH 7.3, with 50% Glycerol and 0.05% Proclin 300.
Storage:	Shipped at 4°C. Upon delivery aliquot and store at -20°C. Avoid freeze / thaw cycles.
Disclaimer:	This product is for research use only. It is not intended for diagnostic or therapeutic use.

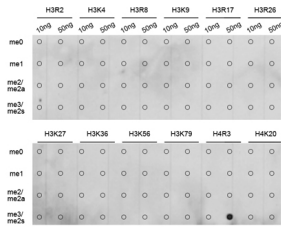
Images:



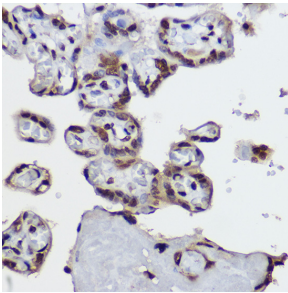
Western blot analysis of various lysates, using Anti-Histone H4 (di methyl Arg3) Antibody (A16733) at 1:2,000 dilution. The secondary antibody was Goat Anti-Rabbit IgG H&L Antibody (HRP) at 1:10,000 dilution. Lysates/proteins were present at 25µg per lane. The blocking buffer used was 3% non-fat dry milk in TBST. Detection was with a ECL Basic Kit. Exposure time: 90s.

Anti-Histone H4 (di methyl Arg3) Antibody (A16733)

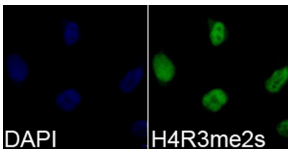
Images continued:



Dot blot analysis of a mixture of methylation peptides using Anti-Histone H4 (di methyl Arg3) Antibody (A16733).



Immunohistochemistry analysis of paraffin-embedded human placenta using Anti-Histone H4 (di methyl Arg3) Antibody (A16733) at a dilution of 1:100 (40x lens). Perform high pressure antigen retrieval with 10 mM citrate buffer pH 6.0 before commencing with IHC staining protocol.



Immunofluorescence analysis of 293T cells using Anti-Histone H4 (di methyl Arg3) Antibody (A16733). DAPI was used to stain the cell nuclei (blue).