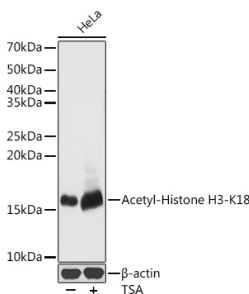


Anti-Histone H3 (acetyl Lys18) Antibody (A16743)

Specifications:

Name:	Anti-Histone H3 (acetyl Lys18) Antibody
Description:	Rabbit polyclonal antibody to Histone H3 (acetyl Lys18).
Applications:	WB, IHC, ICC/IF, IP, ChIP, ChIP-seq
Recommended Dilutions:	WB: 1:100-1:500, IHC: 1:200-1:500, ICC/IF: 1:500-1:1,000, IP: 1:200-1:500, ChIP: 1:50-1:100, ChIP-seq: 1:50-1:100
Reactivity:	Human, Mouse, Rat
Immunogen:	A synthetic acetylated peptide around K18 of human H3 (NP_003520.1).
Sequence:	PRKQL
Host:	Rabbit
Clonality:	Polyclonal
Isotype:	IgG
Conjugate:	Unconjugated
Purification:	Affinity purification.
Molecular Weight:	17 kDa
Product Form:	Liquid
Formulation:	Supplied in Phosphate Buffered Saline, pH 7.3, with 50% Glycerol and 0.05% Proclin 300.
Storage:	Shipped at 4°C. Upon delivery aliquot and store at -20°C. Avoid freeze / thaw cycles.
Disclaimer:	This product is for research use only. It is not intended for diagnostic or therapeutic use.

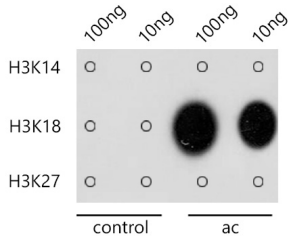
Images:



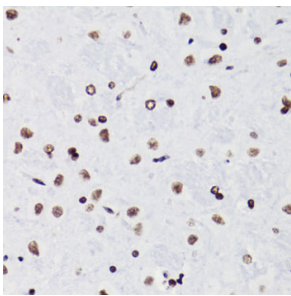
Western blot analysis of extracts of HeLa cells, using Anti-Histone H3 (acetyl Lys18) Antibody (A16743) at 1:500 dilution. HeLa cells were treated by TSA (1 μ M) at 37°C for 18 hours. The secondary antibody was Goat Anti-Rabbit IgG H&L Antibody (HRP) at 1:10,000 dilution. Lysates/proteins were present at 25 μ g per lane. The blocking buffer used was 3% non-fat dry milk in TBST. Detection was with a ECL Basic Kit. Exposure time: 1s.

Anti-Histone H3 (acetyl Lys18) Antibody (A16743)

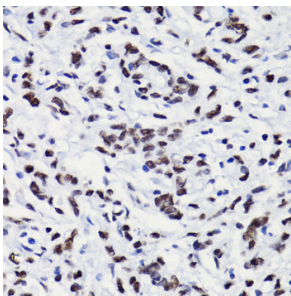
Images continued:



Dot blot analysis of a mixture of methylation peptides using Anti-Histone H3 (acetyl Lys18) Antibody (A16743) at a 1:1,000 dilution.



Immunohistochemistry analysis of paraffin-embedded rat brain using Anti-Histone H3 (acetyl Lys18) Antibody (A16743) at a dilution of 1:100 (40x lens). Perform microwave antigen retrieval with 10 mM PBS buffer pH 7.2 before commencing with IHC staining protocol.



Immunohistochemistry analysis of paraffin-embedded human gastric cancer using Anti-Histone H3 (acetyl Lys18) Antibody (A16743) at a dilution of 1:100 (40x lens). Perform microwave antigen retrieval with 10 mM PBS buffer pH 7.2 before commencing with IHC staining protocol.