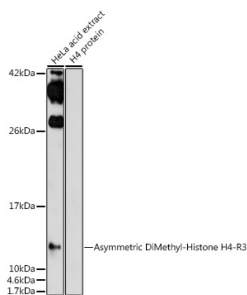


# Anti-Histone H4 (asymmetric di methyl Arg3) Antibody (A16745)

## Specifications:

Name:	Anti-Histone H4 (asymmetric di methyl Arg3) Antibody
Description:	Rabbit polyclonal antibody to Histone H4 (asymmetric di methyl Arg3).
Applications:	WB, IHC
Recommended Dilutions:	WB: 1:500-1:1,000, IHC: 1:50-1:200
Reactivity:	Human, Mouse, Rat
Immunogen:	A synthetic asymmetric dimethylated peptide around R3 of human HIST2H4A (NP_003529.1).
Sequence:	SGRGK
Host:	Rabbit
Clonality:	Polyclonal
Isotype:	IgG
Conjugate:	Unconjugated
Purification:	Affinity purification.
Molecular Weight:	14 kDa
Product Form:	Liquid
Formulation:	Supplied in Phosphate Buffered Saline, pH 7.3, with 50% Glycerol and 0.02% Sodium Azide.
Storage:	Shipped at 4°C. Upon delivery aliquot and store at -20°C. Avoid freeze / thaw cycles.
Disclaimer:	This product is for research use only. It is not intended for diagnostic or therapeutic use.

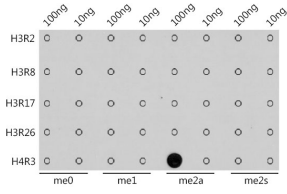
## Images:



Western blot analysis of extracts of HeLa cells, using Anti-Histone H4 (asymmetric di methyl Arg3) Antibody (A16745) at 1:1,000 dilution. The secondary antibody was Goat Anti-Rabbit IgG H&L Antibody (HRP) at 1:10,000 dilution. Lysates/proteins were present at 25µg per lane. The blocking buffer used was 3% non-fat dry milk in TBST. Detection was with a ECL Enhanced Kit (RM00021). Exposure time: 300s.

## Anti-Histone H4 (asymmetric di methyl Arg3) Antibody (A16745)

Images continued:



Dot blot analysis of a mixture of methylation peptides using Anti-Histone H4 (asymmetric di methyl Arg3) Antibody (A16745) at a 1:1,000 dilution.