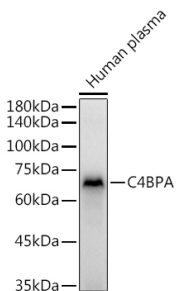


Anti-C4BPA Antibody (A16907)

Specifications:

Name:	Anti-C4BPA Antibody
Description:	Rabbit polyclonal antibody to C4BPA.
Applications:	WB, IHC
Recommended Dilutions:	WB: 1:1,000-1:5,000, IHC: 1:50-1:100
Reactivity:	Human, Mouse, Rat
Immunogen:	A synthetic peptide corresponding to a sequence within amino acids 500 to the C-terminus of human C4BPA (NP_000706.1).
Sequence:	QYVEPENVTIQCDSGYGVVGPQSITCSGNRTWYPEVPKCEWETPEGCEQVLTGKRLMQ CLPNPEDVKMALEVYKLSLEIEQLELQRDSARQSTLDKEL
Host:	Rabbit
Clonality:	Polyclonal
Isotype:	IgG
Conjugate:	Unconjugated
Purification:	Affinity purification.
Molecular Weight:	70 kDa
Product Form:	Liquid
Formulation:	Supplied in Phosphate Buffered Saline, pH 7.3, with 50% Glycerol and 0.05% Proclin 300.
Storage:	Shipped at 4°C. Upon delivery aliquot and store at -20°C. Avoid freeze / thaw cycles.
Disclaimer:	This product is for research use only. It is not intended for diagnostic or therapeutic use.

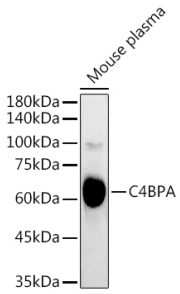
Images:



Western blot analysis of extracts of Human plasma, using Anti-C4BPA Antibody (A16907) at 1:3,000 dilution. The secondary antibody was Goat Anti-Rabbit IgG H&L Antibody (HRP) at 1:10,000 dilution. Lysates/proteins were present at 25µg per lane. The blocking buffer used was 3% non-fat dry milk in TBST. Detection was with a ECL Basic Kit. Exposure time: 5s.

Anti-C4BPA Antibody (A16907)

Images continued:



Western blot analysis of extracts of Mouse plasma, using Anti-C4BPA Antibody (A16907) at 1:3,000 dilution. The secondary antibody was Goat Anti-Rabbit IgG H&L Antibody (HRP) at 1:10,000 dilution. Lysates/proteins were present at 25 μ g per lane. The blocking buffer used was 3% non-fat dry milk in TBST. Detection was with a ECL Basic Kit. Exposure time: 90s.