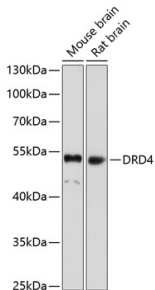


Anti-DRD4 Antibody (A17186)

Specifications:

Name:	Anti-DRD4 Antibody
Description:	Rabbit polyclonal antibody to DRD4.
Applications:	WB, IHC
Recommended Dilutions:	WB: 1:500-1:1,000, IHC: 1:50-1:200
Reactivity:	Mouse, Rat
Immunogen:	A synthetic peptide corresponding to a sequence within amino acids 100-200 of human DRD4 (NP_000788.2).
Sequence:	AWLLSPRLCDALMAMDVMLCTASIFNLCAISVDRFVAVAVPLRYNRQGGSRRLLLIG ATWLLSAAVAAPVLCGLNDVRGRDPAVCRLEDRDYVVYSSVCS
Host:	Rabbit
Clonality:	Polyclonal
Isotype:	IgG
Conjugate:	Unconjugated
Purification:	Affinity purification.
Molecular Weight:	52 kDa
Product Form:	Liquid
Formulation:	Supplied in Phosphate Buffered Saline, pH 7.3, with 50% Glycerol and 0.02% Sodium Azide.
Storage:	Shipped at 4°C. Upon delivery aliquot and store at -20°C. Avoid freeze / thaw cycles.
Disclaimer:	This product is for research use only. It is not intended for diagnostic or therapeutic use.

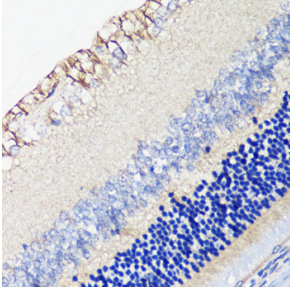
Images:



Western blot analysis of extracts of various cell lines, using Anti-DRD4 Antibody (A17186) at 1:1,000 dilution. The secondary antibody was Goat Anti-Rabbit IgG H&L Antibody (HRP) at 1:10,000 dilution. Lysates/proteins were present at 25µg per lane. The blocking buffer used was 3% non-fat dry milk in TBST. Detection was with a ECL Basic Kit. Exposure time: 90s.

Anti-DRD4 Antibody (A17186)

Images continued:



Immunohistochemistry analysis of paraffin-embedded rat retina using Anti-DRD4 Antibody (A17186) at a dilution of 1:100 (40x lens).