

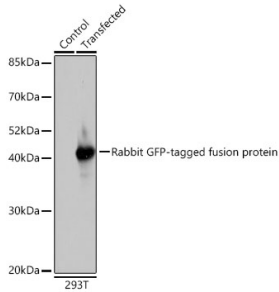
## Anti-GFP Antibody (A17321)

### Specifications:

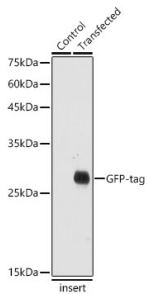
Name:	Anti-GFP Antibody
Description:	Rabbit polyclonal antibody to GFP.
Applications:	WB, ICC/IF
Recommended Dilutions:	WB: 1:2,000-1:20,000, ICC/IF: 1:50-1:200
Reactivity:	Species Independent
Immunogen:	Recombinant fusion protein containing a sequence corresponding to amino acids 1-238 of GFP.
Sequence:	MSKGEELFTGVVPILVELDGDVNGHKFSVSGEGEGDATYGKLTCLKFICTTGKLPVWP TLVTTLTLYGVQCFSRYPDHMKRHDFFKSAMPEGYVQERTISFKDDGNYKTRAEVKFEG DTLVNRIELKGIDFKEDGNILGHKLEYNYNSHNVYITADKQKNGIKANFKTRHNIEDG GVQLADHYQQNTPIGDGPVLLPDNHYLSTQSALSKDPNEKRDHMLLEFVTAAGITHG MDELYK
Host:	Rabbit
Clonality:	Polyclonal
Isotype:	IgG
Conjugate:	Unconjugated
Purification:	Affinity purification.
Molecular Weight:	25 kDa
Product Form:	Liquid
Formulation:	Supplied in Phosphate Buffered Saline, pH 7.3, with 50% Glycerol and 0.01% Thiomersal.
Storage:	Shipped at 4°C. Upon delivery aliquot and store at -20°C. Avoid freeze / thaw cycles.
Disclaimer:	This product is for research use only. It is not intended for diagnostic or therapeutic use.

## Anti-GFP Antibody (A17321)

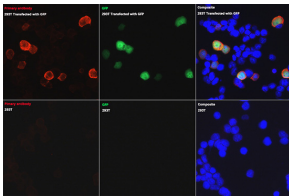
### Images:



Western blot analysis of extracts of normal 293T cells and 293T transfected with GFP-tagged fusion protein, using Anti-GFP Antibody (A17321) at 1:10,000 dilution. Lysates/proteins were present at 25µg per lane. The blocking buffer used was 3% non-fat dry milk in TBST. Detection was with a ECL Basic Kit. Exposure time: 10s.



Western blot analysis of extracts of normal Eukaryotic expression of GFP and Eukaryotic expression of GFP transfected with GFP Protein, using Anti-GFP Antibody (A17321) at 1:10,000 dilution. Lysates/proteins were present at 25µg per lane. The blocking buffer used was 3% non-fat dry milk in TBST. Detection was with a ECL Basic Kit. Exposure time: 1s.



Immunofluorescence analysis of 293T and 293T-GFP cells using Anti-GFP Antibody (A17321) at a dilution of 1:50 (40x lens). DAPI was used to stain the cell nuclei (blue).