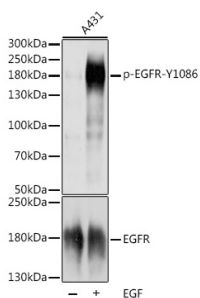


## Rabbit Anti-Sheep IgG H&L Antibody (HRP) (A17336)

### Specifications:

Name:	Rabbit Anti-Sheep IgG H&L Antibody (HRP)
Description:	Rabbit Anti-Sheep IgG H&L Antibody (HRP).
Host Species:	Rabbit
Target Species:	Sheep
Applications:	WB, IHC
Recommended Dilutions:	WB: 1:5,000-1:10,000, IHC: 1:500-1:5,000
Immunogen:	Sheep IgG.
Clonality:	Polyclonal
Isotype:	IgG
Conjugate:	HRP
Product Form:	Liquid
Purification:	Affinity purification.
Formulation:	Supplied in Phosphate Buffered Saline, pH 7.3, with 50% Glycerol and 0.75% BSA.
Storage:	Shipped at 4°C. Upon delivery aliquot and store at -20°C. Avoid freeze / thaw cycles.
Disclaimer:	This product is for research use only. It is not intended for diagnostic or therapeutic use.

### Images:



Western blot analysis of extracts of A-431 cells, using Rabbit Anti-Sheep IgG H&L Antibody (HRP) (A17336) at 1:1,000 dilution or EGFR antibody (A11351). A-431 cells were treated by EGF (100 ng/ml) at 37°C for 30 minutes after serum-starvation overnight. The secondary antibody was Goat Anti-Rabbit IgG H&L Antibody (HRP) at 1:10,000 dilution. Lysates/proteins were present at 25µg per lane. The blocking buffer used was 3% BSA. Detection was with a ECL Basic Kit. Exposure time: 1s.