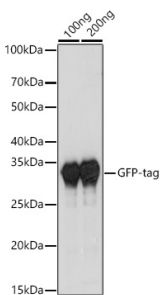


Goat Anti-Rabbit IgG H&L Antibody (AP) (A17340)

Specifications:

Name:	Goat Anti-Rabbit IgG H&L Antibody (AP)
Description:	Goat Anti-Rabbit IgG H&L Antibody (AP).
Host Species:	Goat
Target Species:	Rabbit
Applications:	WB
Recommended Dilutions:	WB: 1:5,000-1:50,000
Immunogen:	Rabbit IgG.
Clonality:	Polyclonal
Isotype:	IgG
Conjugate:	AP
Product Form:	Liquid
Purification:	Affinity purification.
Formulation:	Supplied in Phosphate Buffered Saline, pH 7.3, with 50% Glycerol, 0.75% BSA, and 0.025% Sodium Azide.
Storage:	Store in the dark at 4°C. Avoid prolonged exposure to light. Do not freeze!
Disclaimer:	This product is for research use only. It is not intended for diagnostic or therapeutic use.

Images:



Western blot analysis of extracts of various cell lines, using Goat Anti-Rabbit IgG H&L Antibody (AP) (A17340) at 1:1,000 dilution. Lysates/proteins were present at 25µg per lane. The blocking buffer used was 3% non-fat dry milk in TBST. Detection was with a ECL Basic Kit. Exposure time: 3s.