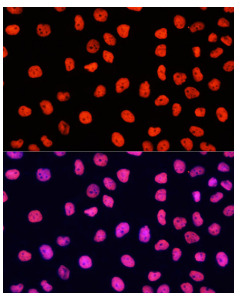


Goat Anti-Rabbit IgG H&L Antibody (Cyanine 3) (A17341)

Specifications:

Name:	Goat Anti-Rabbit IgG H&L Antibody (Cyanine 3)
Description:	Goat Anti-Rabbit IgG H&L Antibody (Cyanine 3).
Host Species:	Goat
Target Species:	Rabbit
Applications:	ICC/IF, Flow Cytometry
Recommended Dilutions:	ICC/IF: 1:100-1:800, Flow Cytometry: 1:100-1:800
Immunogen:	Rabbit IgG.
Clonality:	Polyclonal
Isotype:	IgG
Conjugate:	Cyanine 3
Product Form:	Liquid
Purification:	Affinity purification.
Formulation:	Supplied in Phosphate Buffered Saline, pH 7.3, with 50% Glycerol, 0.75% BSA, and 0.025% Sodium Azide.
Storage:	Store in the dark at 4°C. Avoid prolonged exposure to light. Do not freeze!
Disclaimer:	This product is for research use only. It is not intended for diagnostic or therapeutic use.

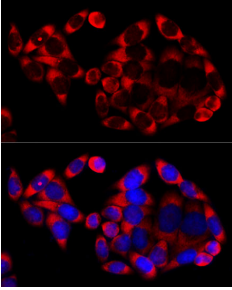
Images:



Immunofluorescence analysis of HeLa cells, using Goat Anti-Rabbit IgG H&L Antibody (Cyanine 3, (A17341) as the primary antibody at a dilution of 1:100. The cells were incubated with the primary antibody overnight at 4°C. Secondary antibody: Cy3 Goat Anti-Rabbit IgG (H+L, (AS007). DAPI was used to stain the cell nuclei (blue).

Goat Anti-Rabbit IgG H&L Antibody (Cyanine 3) (A17341)

Images continued:



Immunofluorescence analysis of HeLa cells, using Goat Anti-Rabbit IgG H&L Antibody (Cyanine 3, (A17341) as the primary antibody at a dilution of 1:100. The cells were incubated with the primary antibody overnight at 4°C. Secondary antibody: Cy3 Goat Anti-Rabbit IgG (H+L, (AS007). DAPI was used to stain the cell nuclei (blue).