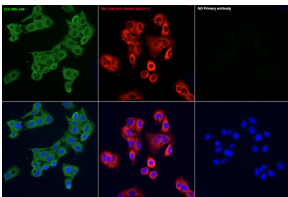


Goat Anti-Rabbit IgG H&L Antibody (FITC) (A17342)

Specifications:

Name:	Goat Anti-Rabbit IgG H&L Antibody (FITC)
Description:	Goat Anti-Rabbit IgG H&L Antibody (FITC).
Host Species:	Goat
Target Species:	Rabbit
Applications:	ICC/IF, Flow Cytometry
Recommended Dilutions:	ICC/IF: 1:50-1:200, Flow Cytometry: 1:50-1:200
Immunogen:	Rabbit IgG.
Clonality:	Polyclonal
Isotype:	IgG
Conjugate:	FITC
Product Form:	Liquid
Purification:	Affinity purification.
Formulation:	Supplied in Phosphate Buffered Saline, pH 7.3, with 50% Glycerol, 0.75% BSA, and 0.025% Sodium Azide.
Storage:	Store in the dark at 4°C. Avoid prolonged exposure to light. Do not freeze!
Disclaimer:	This product is for research use only. It is not intended for diagnostic or therapeutic use.

Images:



Immunofluorescence analysis of HepG2 cells, using Goat Anti-Rabbit IgG H&L Antibody (FITC, (A17342) as the primary antibody at a dilution of 1:100. Secondary antibody: FITC Goat Anti-Rabbit IgG (H+L, (AS011). DAPI was used to stain the cell nuclei (blue).