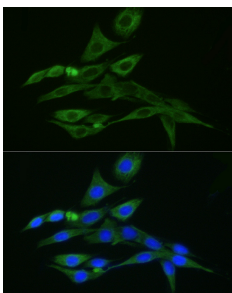


Donkey Anti-Rabbit IgG H&L Antibody (FITC) (A17343)

Specifications:

Name:	Donkey Anti-Rabbit IgG H&L Antibody (FITC)
Description:	Donkey Anti-Rabbit IgG H&L Antibody (FITC).
Host Species:	Donkey
Target Species:	Rabbit
Applications:	ICC/IF, Flow Cytometry
Recommended Dilutions:	ICC/IF: 1:50-1:200, Flow Cytometry: 1:50-1:200
Immunogen:	Rabbit IgG.
Clonality:	Polyclonal
Isotype:	IgG
Conjugate:	FITC
Product Form:	Liquid
Purification:	Affinity purification.
Formulation:	Supplied in Phosphate Buffered Saline, pH 7.3, with 50% Glycerol, 0.75% BSA, and 0.025% Sodium Azide.
Storage:	Store in the dark at 4°C. Avoid prolonged exposure to light. Do not freeze!
Disclaimer:	This product is for research use only. It is not intended for diagnostic or therapeutic use.

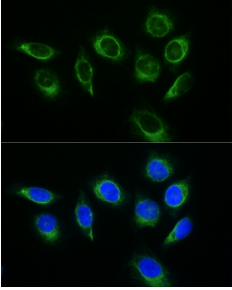
Images:



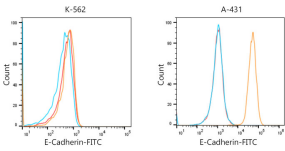
Immunofluorescence analysis of PC-12 using Donkey Anti-Rabbit IgG H&L Antibody (FITC) (A17343) at a dilution of 1:200 (40x lens). DAPI was used to stain the cell nuclei (blue).

Donkey Anti-Rabbit IgG H&L Antibody (FITC) (A17343)

Images continued:



Immunofluorescence analysis of HeLa using Donkey Anti-Rabbit IgG H&L Antibody (FITC) (A17343) at a dilution of 1:200 (40x lens). DAPI was used to stain the cell nuclei (blue).



Flow cytometric analysis of Positive antibody E-Cadherin Rabbit mAb (2.5 $\mu\text{g/ml}$) in various cells (orange) compared to Rabbit rabbit isotype control (blue) and non-staining control (red). The secondary antibody was Donkey Anti-Rabbit IgG H&L Antibody (FITC) (A17343) at 1:100.