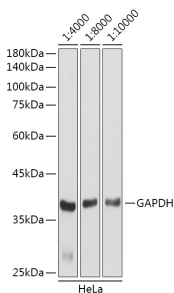


Goat Anti-Rabbit IgG H&L Antibody (HRP) (A17345)

Specifications:

Name:	Goat Anti-Rabbit IgG H&L Antibody (HRP)
Description:	Goat Anti-Rabbit IgG H&L Antibody (HRP).
Host Species:	Goat
Target Species:	Rabbit
Applications:	WB, IHC, ELISA
Recommended Dilutions:	ELISA: 1:5,000-1:10,000, WB: 1:2,000-1:10,000, IHC: 1:50-1:200
Immunogen:	Rabbit IgG.
Clonality:	Polyclonal
Isotype:	IgG
Conjugate:	HRP
Product Form:	Liquid
Purification:	Affinity purification.
Formulation:	Supplied in Phosphate Buffered Saline, pH 7.3, with 50% Glycerol and 0.75% BSA.
Storage:	Shipped at 4°C. Upon delivery aliquot and store at -20°C. Avoid freeze / thaw cycles.
Disclaimer:	This product is for research use only. It is not intended for diagnostic or therapeutic use.

Images:



Western blot analysis of extracts of HeLa cells, using Goat Anti-Rabbit IgG H&L Antibody (HRP) (A17345) at 1:4000-1:10,000 dilution. Lysates/proteins were present at 25µg per lane. The blocking buffer used was 3% non-fat dry milk in TBST. Detection was with a ECL Basic Kit. Exposure time: 3s.