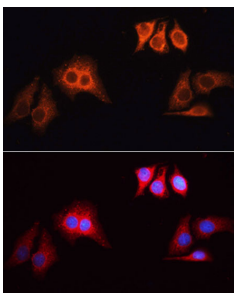


Goat Anti-Rabbit IgG H&L Antibody (TRITC) (A17346)

Specifications:

Name:	Goat Anti-Rabbit IgG H&L Antibody (TRITC)
Description:	Goat Anti-Rabbit IgG H&L Antibody (TRITC).
Host Species:	Goat
Target Species:	Rabbit
Applications:	IHC, ICC/IF, Flow Cytometry
Recommended Dilutions:	IHC: 1:50-1:200, ICC/IF: 1:50-1:200, Flow Cytometry: 1:50-1:200
Immunogen:	Rabbit IgG.
Clonality:	Polyclonal
Isotype:	IgG
Conjugate:	TRITC
Product Form:	Liquid
Purification:	Affinity purification.
Formulation:	Supplied in Phosphate Buffered Saline, pH 7.3, with 50% Glycerol, 0.75% BSA, and 0.025% Sodium Azide.
Storage:	Store in the dark at 4°C. Avoid prolonged exposure to light. Do not freeze!
Disclaimer:	This product is for research use only. It is not intended for diagnostic or therapeutic use.

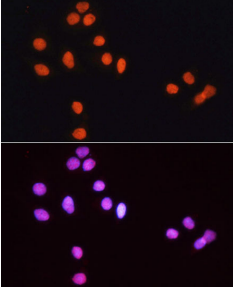
Images:



Immunofluorescence analysis of HeLa cells, using Goat Anti-Rabbit IgG H&L Antibody (TRITC, (A17346) as the primary antibody at a dilution of 1:100. The cells were incubated with the primary antibody overnight at 4°C. Secondary antibody: Rhodamine (TRITC) Goat Anti-Rabbit IgG (H+L, (AS040) at 1:200 dilution. DAPI was used to stain the cell nuclei (blue).

Goat Anti-Rabbit IgG H&L Antibody (TRITC) (A17346)

Images continued:



Immunofluorescence analysis of HeLa cells, using Goat Anti-Rabbit IgG H&L Antibody (TRITC, (A17346) as the primary antibody at a dilution of 1:100. The cells were incubated with the primary antibody overnight at 4°C. Secondary antibody: Rhodamine (TRITC) Goat Anti-Rabbit IgG (H+L, (AS040) at 1:100 dilution. DAPI was used to stain the cell nuclei (blue).