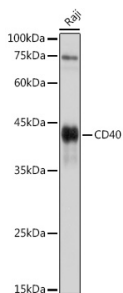


## Goat Anti-Guinea Pig IgG H&L Antibody (HRP) (A17347)

### Specifications:

Name:	Goat Anti-Guinea Pig IgG H&L Antibody (HRP)
Description:	Goat Anti-Guinea Pig IgG H&L Antibody (HRP).
Host Species:	Goat
Target Species:	Guinea Pig
Applications:	WB, IHC
Recommended Dilutions:	WB: 1:5,000-1:10,000, IHC: 1:500-1:5,000
Immunogen:	Guinea Pig IgG.
Clonality:	Polyclonal
Isotype:	IgG
Conjugate:	HRP
Product Form:	Liquid
Purification:	Affinity purification.
Formulation:	Supplied in Phosphate Buffered Saline, pH 7.3, with 50% Glycerol and 0.75% BSA.
Storage:	Shipped at 4°C. Upon delivery aliquot and store at -20°C. Avoid freeze / thaw cycles.
Disclaimer:	This product is for research use only. It is not intended for diagnostic or therapeutic use.

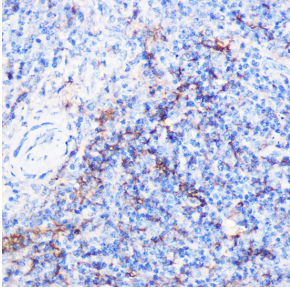
### Images:



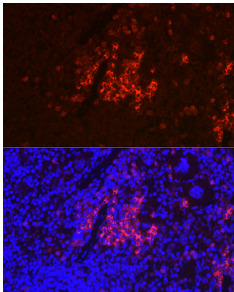
Western blot analysis of extracts of Raji cells, using Goat Anti-Guinea Pig IgG H&L Antibody (HRP) (A17347) at 1:1,000 dilution. The secondary antibody was Goat Anti-Rabbit IgG H&L Antibody (HRP) at 1:10,000 dilution. Lysates/proteins were present at 25µg per lane. The blocking buffer used was 3% non-fat dry milk in TBST. Detection was with a ECL Basic Kit. Exposure time: 3s.

## Goat Anti-Guinea Pig IgG H&L Antibody (HRP) (A17347)

Images continued:



Immunohistochemistry analysis of paraffin-embedded mouse spleen using Goat Anti-Guinea Pig IgG H&L Antibody (HRP) (A17347) at a dilution of 1:100 (40x lens). Perform high pressure antigen retrieval with 10 mM citrate buffer pH 6.0 before commencing with IHC staining protocol.



Immunofluorescence analysis of mouse spleen using Goat Anti-Guinea Pig IgG H&L Antibody (HRP) (A17347) at a dilution of 1:100 (40x lens). DAPI was used to stain the cell nuclei (blue).