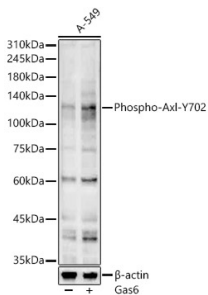


## Donkey Anti-Goat IgG H&L Antibody (FITC) (A17355)

### Specifications:

|                        |   |
|------------------------|---|
| Name:                  | Donkey Anti-Goat IgG H&L Antibody (FITC)  |
| Description:           | Donkey Anti-Goat IgG H&L Antibody (FITC).   |
| Host Species:          | Donkey  |
| Target Species:        | Goat  |
| Applications:          | ICC/IF, Flow Cytometry  |
| Recommended Dilutions: | ICC/IF: 1:50-1:200, Flow Cytometry: 1:50-1:200  |
| Immunogen:             | Goat IgG.   |
| Clonality:             | Polyclonal  |
| Isotype:               | IgG   |
| Conjugate:             | FITC  |
| Product Form:          | Liquid  |
| Purification:          | Affinity purification.  |
| Formulation:           | Supplied in Phosphate Buffered Saline, pH 7.3, with 50% Glycerol, 0.75% BSA, and 0.025% Sodium Azide. |
| Storage:               | Store in the dark at 4°C. Avoid prolonged exposure to light. Do not freeze!                           |
| Disclaimer:            | This product is for research use only. It is not intended for diagnostic or therapeutic use.          |

### Images:



Western blot analysis of A-549, using Donkey Anti-Goat IgG H&L Antibody (FITC) (A17355) at 1:400 dilution. A-549 cells were treated by Gas6 (400 ng/ml) at 37°C for 5 minutes. The secondary antibody was Goat Anti-Rabbit IgG H&L Antibody (HRP) at 1:10,000 dilution. Lysates/proteins were present at 25µg per lane. The blocking buffer used was 3% non-fat dry milk in TBST. Detection was with a ECL Basic Kit. Exposure time: 90s.