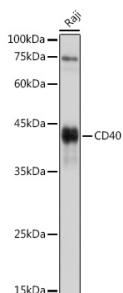


Rabbit Anti-Goat IgG H&L Antibody (FITC) (A17356)

Specifications:

Name:	Rabbit Anti-Goat IgG H&L Antibody (FITC)
Description:	Rabbit Anti-Goat IgG H&L Antibody (FITC).
Host Species:	Rabbit
Target Species:	Goat
Applications:	ICC/IF, Flow Cytometry
Recommended Dilutions:	ICC/IF: 1:20-1:100, Flow Cytometry: 1:100-1:500
Immunogen:	Goat IgG.
Clonality:	Polyclonal
Isotype:	IgG
Conjugate:	FITC
Product Form:	Liquid
Purification:	Affinity purification.
Formulation:	Supplied in Phosphate Buffered Saline, pH 7.3, with 50% Glycerol and 0.02% Sodium Azide.
Storage:	Store in the dark at 4°C. Avoid prolonged exposure to light. Do not freeze!
Disclaimer:	This product is for research use only. It is not intended for diagnostic or therapeutic use.

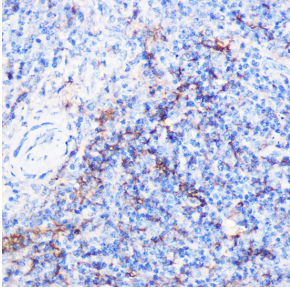
Images:



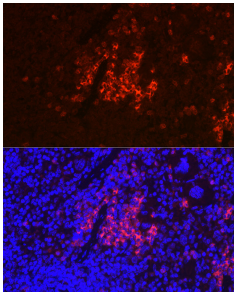
Western blot analysis of extracts of Raji cells, using Rabbit Anti-Goat IgG H&L Antibody (FITC) (A17356) at 1:1,000 dilution. The secondary antibody was Goat Anti-Rabbit IgG H&L Antibody (HRP) at 1:10,000 dilution. Lysates/proteins were present at 25µg per lane. The blocking buffer used was 3% non-fat dry milk in TBST. Detection was with a ECL Basic Kit. Exposure time: 3s.

Rabbit Anti-Goat IgG H&L Antibody (FITC) (A17356)

Images continued:



Immunohistochemistry analysis of paraffin-embedded mouse spleen using Rabbit Anti-Goat IgG H&L Antibody (FITC) (A17356) at a dilution of 1:100 (40x lens). Perform high pressure antigen retrieval with 10 mM citrate buffer pH 6.0 before commencing with IHC staining protocol.



Immunofluorescence analysis of mouse spleen using Rabbit Anti-Goat IgG H&L Antibody (FITC) (A17356) at a dilution of 1:100 (40x lens). DAPI was used to stain the cell nuclei (blue).