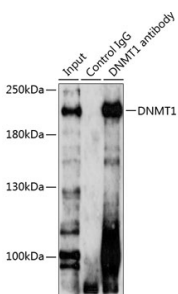


Rabbit Anti-Goat IgG H&L Antibody (HRP) (A17358)

Specifications:

Name:	Rabbit Anti-Goat IgG H&L Antibody (HRP)
Description:	Rabbit Anti-Goat IgG H&L Antibody (HRP).
Host Species:	Rabbit
Target Species:	Goat
Applications:	WB, IHC
Recommended Dilutions:	WB: 1:5,000-1:10,000, IHC: 1:500-1:5,000
Immunogen:	Goat IgG.
Clonality:	Polyclonal
Isotype:	IgG
Conjugate:	HRP
Product Form:	Liquid
Purification:	Affinity purification.
Formulation:	Supplied in Phosphate Buffered Saline, pH 7.3, with 50% Glycerol, 0.75% BSA, and 0.025% Sodium Azide.
Storage:	Shipped at 4°C. Upon delivery aliquot and store at -20°C. Avoid freeze / thaw cycles.
Disclaimer:	This product is for research use only. It is not intended for diagnostic or therapeutic use.

Images:



Immunoprecipitation analysis of 200 μ g extracts of 293T cells using 3 μ g of Rabbit Anti-Goat IgG H&L Antibody (HRP) (A17358). This Western blot was performed on the immunoprecipitate using Anti-Dnmt1 Antibody (A14805) at a dilution of 1:1000.