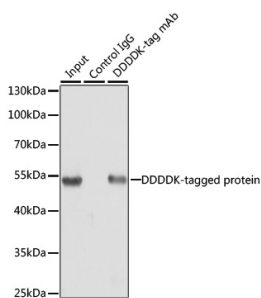


Rabbit IgG - Isotype Control (A17360)

Specifications:

Name:	Rabbit IgG - Isotype Control
Description:	Rabbit IgG - Isotype Control
Applications:	IP, ChIP
Recommended Dilutions:	IP: 1:50-1:200, ChIP: 1:50-1:200
Host:	Rabbit
Clonality:	Polyclonal
Isotype:	IgG
Conjugate:	Unconjugated
Purification:	Protein A/G purification.
Product Form:	Liquid
Formulation:	Supplied in Phosphate Buffered Saline, pH 7.3, with 50% Glycerol and 0.05% Proclin 300.
Storage:	Shipped at 4°C. Upon delivery aliquot and store at -20°C. Avoid freeze / thaw cycles.
Disclaimer:	This product is for research use only. It is not intended for diagnostic or therapeutic use.

Images:



Immunoprecipitation of over-expressed DDDDK-tagged protein in 293T cells incubated using Anti-DDDDK Tag Antibody [ARC5111-02] (A93056). A mock served as negative control using Rabbit IgG - Isotype Control (A17360) and over-expressed 293T cell lysate served as positive control.