

Anti-p21 Antibody [DCS-60.2] (A248084)

Specifications:

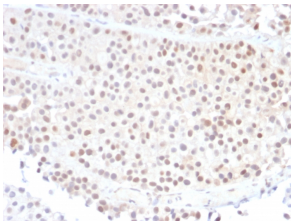
Name:	Anti-p21 Antibody [DCS-60.2]
Description:	Mouse monoclonal [DCS-60.2] antibody to p21.
Specificity:	This antibody recognizes a 21kDa protein, identified as the p21WAF1 tumor suppressor protein. This antibody is highly specific to p21 and shows no cross-reaction with other closely related mitotic inhibitors. p21WAF1 is a specific inhibitor of cdks and a tumor suppressor involved in the pathogenesis of a variety of malignancies. The expression of this gene acts as an inhibitor of the cell cycle during G1 phase and is tightly controlled by the tumor suppressor protein p53. Its expression is induced by the wild type, but not mutant, p53 suppressor protein. Normal cells generally display a rather intense nuclear p21 expression. Loss of p21 expression has been reported in many carcinomas (gastric carcinoma, non-small cell lung carcinoma, thyroid carcinoma).
Applications:	Flow Cytometry, IF, WB, IHC-P
Recommended Dilutions:	Flow Cytometry: 1-2 µg/million cells, IF: 1-2 µg/ml, WB: 1-2 µg/ml, IHC-P: 2-4 µg/ml
Reactivity:	Human
Cross Reactivity:	This antibody does not cross react with Mouse or Rat.
Immunogen:	Recombinant full-length human p21 protein.
Host:	Mouse
Clonality:	Monoclonal
Clone ID:	DCS-60.2
Isotype:	IgG2a
Light Chains:	kappa
Conjugate:	Unconjugated
Purification:	Protein A/G chromatography.
Concentration:	200 µg/ml
Product Form:	Liquid
Formulation:	Supplied in 10mM Phosphate Buffered Saline with 0.05% BSA and 0.05% Sodium Azide.
Storage:	Shipped at 4°C. Upon delivery aliquot and store at -20°C. Avoid freeze / thaw cycles.

Anti-p21 Antibody [DCS-60.2] (A248084)

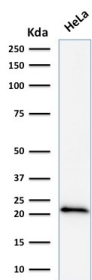
Specifications continued:

General Notes:	This monoclonal antibody is also available in a different formulation without BSA and Sodium Azide - Anti-p21 Antibody [DCS-60.2] - BSA and Azide free (A251267).
Disclaimer:	This product is for research use only. It is not intended for diagnostic or therapeutic use.

Images:



Immunohistochemical analysis of formalin-fixed, paraffin-embedded human bladder carcinoma using Anti-p21 Antibody [DCS-60.2].



Western blot analysis of human HeLa cell lysate using Anti-p21 Antibody [DCS-60.2].