

Anti-CDX1 Antibody [CDX1/1650] (A248110)

Specifications:

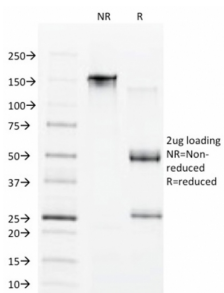
Name:	Anti-CDX1 Antibody [CDX1/1650]
Description:	Mouse monoclonal [CDX1/1650] antibody to CDX1.
Specificity:	<p>The members of the murine Cdx family (Cdx1, Cdx2, and Cdx4) are members of the caudal-type homeobox family of genes, which are homologues of the <i>Drosophila</i> caudal gene required for anterior-posterior regional identity. The intestine-specific transcription factors Cdx1 and Cdx2 are candidate genes for directing intestinal development, differentiation, proliferation and maintenance of the intestinal phenotype. The relative expression of Cdx1 to Cdx2 protein may be important in the anterior to posterior patterning of the intestinal epithelium and in defining patterns of proliferation and differentiation along the crypt-villus axis. Expression of the Cdx1 homeobox gene in epithelial intestinal cells promotes cellular growth and differentiation. Cdx1 positively regulates its own expression. Cdx1 and Cdx2 are expressed in the small intestine and colon of fetus and adult. A decrease in human Cdx1 and/or Cdx2 expression is associated with colorectal tumorigenesis. Both Cdx1 and Cdx2 genes must be expressed to reduce tumorigenic potential, to increase sensitivity to apoptosis and to reduce cell migration, suggesting that the two genes control the normal phenotype by independent pathways. The human Cdx1 gene maps to chromosome 5q32 and encodes a 265-amino acid protein.</p>
Applications:	IHC-P
Recommended Dilutions:	IHC-P: 1-2 µg/ml
Reactivity:	Human
Immunogen:	Recombinant full-length human CDX1 protein.
Host:	Mouse
Clonality:	Monoclonal
Clone ID:	CDX1/1650
Isotype:	IgG1
Light Chains:	kappa
Conjugate:	Unconjugated
Purification:	Protein A/G chromatography.
Concentration:	200 µg/ml
Product Form:	Liquid
Formulation:	Supplied in 10mM Phosphate Buffered Saline with 0.05% BSA and 0.05% Sodium Azide.

Anti-CDX1 Antibody [CDX1/1650] (A248110)

Specifications continued:

Storage:	Shipped at 4°C. Upon delivery aliquot and store at -20°C. Avoid freeze / thaw cycles.
General Notes:	This monoclonal antibody is also available in a different formulation without BSA and Sodium Azide - Anti-CDX1 Antibody [CDX1/1650] - BSA and Azide free (A251293).
Disclaimer:	This product is for research use only. It is not intended for diagnostic or therapeutic use.

Images:



SDS-PAGE analysis of Anti-CDX1 Antibody [CDX1/1650] under non-reduced and reduced conditions; showing intact IgG and intact heavy and light chains, respectively. SDS-PAGE analysis confirms the integrity and purity of the antibody.