

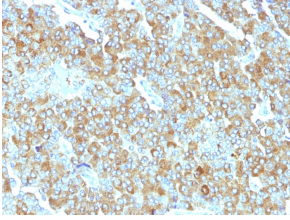
Anti-Chromogranin A Antibody [PHE5] (A248198)

Specifications:

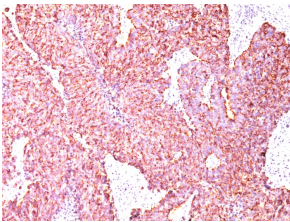
Name:	Anti-Chromogranin A Antibody [PHE5]
Description:	Mouse monoclonal [PHE5] antibody to Chromogranin A.
Applications:	Flow Cytometry, IF, IHC-P
Recommended Dilutions:	Flow Cytometry: 1-2 µg/million cells, IF: 1-2 µg/ml, IHC-P: 1-2 µg/ml
Reactivity:	Human, Monkey
Cross Reactivity:	This antibody does not cross react with Mouse or Rat.
Immunogen:	Human pheochromocytoma.
Host:	Mouse
Clonality:	Monoclonal
Clone ID:	PHE5
Isotype:	IgG1
Light Chains:	kappa
Conjugate:	Unconjugated
Purification:	Protein A/G chromatography.
Concentration:	200 µg/ml
Product Form:	Liquid
Formulation:	Supplied in 10mM Phosphate Buffered Saline with 0.05% BSA and 0.05% Sodium Azide.
Storage:	Shipped at 4°C. Upon delivery aliquot and store at -20°C. Avoid freeze / thaw cycles.
General Notes:	This monoclonal antibody is also available in a different formulation without BSA and Sodium Azide - Anti-Chromogranin A Antibody [PHE5] - BSA and Azide free (A251381).
Disclaimer:	This product is for research use only. It is not intended for diagnostic or therapeutic use.

Anti-Chromogranin A Antibody [PHE5] (A248198)

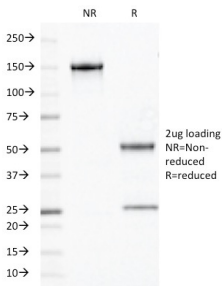
Images:



Immunohistochemical analysis of formalin-fixed, paraffin-embedded human adrenal gland using Anti-Chromogranin A Antibody [PHE5].



SDS-PAGE analysis of Anti-Chromogranin A Antibody [PHE5] under non-reduced and reduced conditions; showing intact IgG and intact heavy and light chains, respectively. SDS-PAGE analysis confirms the integrity and purity of the antibody.



SDS-PAGE analysis of Anti-Chromogranin A Antibody [PHE5] under non-reduced and reduced conditions; showing intact IgG and intact heavy and light chains, respectively. SDS-PAGE analysis confirms the integrity and purity of the antibody.