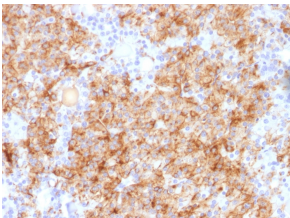


Anti-Chromogranin A Antibody (A248211)

Specifications:

Name:	Anti-Chromogranin A Antibody
Description:	Rabbit polyclonal antibody to Chromogranin A.
Applications:	ELISA, Flow Cytometry, IF, IHC-P
Recommended Dilutions:	ELISA: 1-5 µg/ml, Flow Cytometry: 1-2 µg/million cells, IF: 1-2 µg/ml, IHC-P: 1-2 µg/ml
Reactivity:	Human
Cross Reactivity:	This antibody does not cross react with Rat.
Immunogen:	Recombinant human Chromogranin A protein.
Host:	Rabbit
Clonality:	Polyclonal
Isotype:	IgG
Conjugate:	Unconjugated
Purification:	Protein A chromatography.
Concentration:	200 µg/ml
Product Form:	Liquid
Formulation:	Supplied in 10mM Phosphate Buffered Saline with 0.05% BSA and 0.05% Sodium Azide.
Storage:	Shipped at 4°C. Upon delivery aliquot and store at -20°C. Avoid freeze / thaw cycles.
General Notes:	This monoclonal antibody is also available in a different formulation without BSA and Sodium Azide - Anti-Chromogranin A Antibody - BSA and Azide free (A251394).
Disclaimer:	This product is for research use only. It is not intended for diagnostic or therapeutic use.

Images:



Immunohistochemical analysis of formalin-fixed, paraffin-embedded human parathyroid using Anti-Chromogranin A Antibody.