

Anti-G-CSF Antibody [CSF3/900] (A248275)

Specifications:

| | |
|------------------------|---|
| Name: | Anti-G-CSF Antibody [CSF3/900] |
| Description: | Mouse monoclonal [CSF3/900] antibody to G-CSF. |
| Specificity: | This antibody recognizes granulocyte-colony stimulating factor (G-CSF) in the cytoplasm of mature granulocytes. It shows no reactivity with any other cell types. Markers of myeloid cells are useful in the identification of different levels of cellular differentiation. It reacts with early precursor and mature forms of myeloid cells. It is useful for the detection of myeloid leukemias and granulocytic sarcomas. It can be used as a marker of granulocytes in normal tissues or inflammatory processes. G-CSF is a pleiotropic cytokine that influences differentiation, proliferation and activation of the neutrophilic granulocyte lineage. The human G-CSF cDNA encodes a 207 amino acid precursor containing a 29 amino acid signal peptide that is proteolytically cleaved to form a 178 amino acid residue mature protein. Two G-CSFs share 73% sequence identity at the amino acid level. |
| Applications: | Flow Cytometry, IF, IHC-P |
| Recommended Dilutions: | Flow Cytometry: 1-2 µg/million cells, IF: 1-2 µg/ml, IHC-P: 1-2 µg/ml |
| Reactivity: | Human, Macaque Monkey |
| Immunogen: | Recombinant full-length human CSF3 protein. |
| Host: | Mouse |
| Clonality: | Monoclonal |
| Clone ID: | CSF3/900 |
| Isotype: | IgG1 |
| Light Chains: | kappa |
| Conjugate: | Unconjugated |
| Purification: | Protein A/G chromatography. |
| Concentration: | 200 µg/ml |
| Product Form: | Liquid |
| Formulation: | Supplied in 10mM Phosphate Buffered Saline with 0.05% BSA and 0.05% Sodium Azide. |
| Storage: | Shipped at 4°C. Upon delivery aliquot and store at -20°C. Avoid freeze / thaw cycles. |
| General Notes: | This monoclonal antibody is also available in a different formulation without BSA and Sodium Azide - Anti-G-CSF Antibody [CSF3/900] - BSA and Azide free (A251457). |

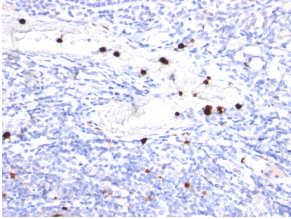
Anti-G-CSF Antibody [CSF3/900] (A248275)

Specifications continued:

Disclaimer:

This product is for research use only. It is not intended for diagnostic or therapeutic use.

Images:



Immunohistochemical analysis of formalin-fixed, paraffin-embedded human tonsil using Anti-G-CSF Antibody [CSF3/900].