

## Anti-Angiotensin Converting Enzyme 1 Antibody [ACE/3763] (A248328)

### Specifications:

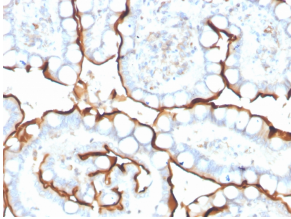
Name:	Anti-Angiotensin Converting Enzyme 1 Antibody [ACE/3763]
Description:	Mouse monoclonal [ACE/3763] antibody to Angiotensin Converting Enzyme 1.
Specificity:	This gene encodes an enzyme involved in catalyzing the conversion of angiotensin I into a physiologically active peptide angiotensin II. Angiotensin II is a potent vasopressor and aldosterone-stimulating peptide that controls blood pressure and fluid-electrolyte balance. This enzyme plays a key role in the renin-angiotensin system. Many studies have associated the presence or absence of a 287 bp Alu repeat element in this gene with the levels of circulating enzyme or cardiovascular pathophysiologies. Two most abundant alternatively spliced variants of this gene encode two isozymes - the somatic form and the testicular form that are equally active. Multiple additional alternatively spliced variants have been identified but their full length nature has not been determined.
Applications:	WB, ELISA, IHC-P
Recommended Dilutions:	WB: 1-2 µg/ml, IHC-P: 1-2 µg/ml
Reactivity:	Human
Immunogen:	Recombinant fragment, around amino acids 652-788, of human ACE protein. The exact sequence is proprietary.
Host:	Mouse
Clonality:	Monoclonal
Clone ID:	ACE/3763
Isotype:	IgG2c
Light Chains:	kappa
Conjugate:	Unconjugated
Purification:	Protein A/G chromatography.
Concentration:	200 µg/ml
Product Form:	Liquid
Formulation:	Supplied in 10mM Phosphate Buffered Saline with 0.05% BSA and 0.05% Sodium Azide.
Storage:	Shipped at 4°C. Upon delivery aliquot and store at -20°C. Avoid freeze / thaw cycles.
General Notes:	This monoclonal antibody is also available in a different formulation without BSA and Sodium Azide - Anti-Angiotensin Converting Enzyme 1 Antibody [ACE/3763] - BSA and Azide free (A251510).

# Anti-Angiotensin Converting Enzyme 1 Antibody [ACE/3763] (A248328)

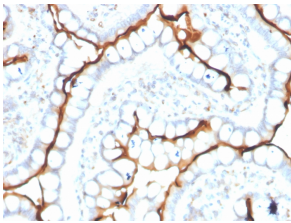
## Specifications continued:

**Disclaimer:** This product is for research use only. It is not intended for diagnostic or therapeutic use.

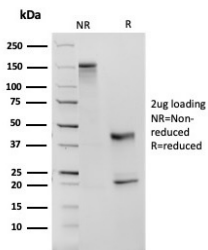
## Images:



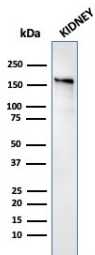
Immunohistochemical analysis of formalin-fixed, paraffin-embedded human small intestine using Anti-Angiotensin Converting Enzyme 1 Antibody [ACE/3763].



Immunohistochemical analysis of formalin-fixed, paraffin-embedded human small intestine using Anti-Angiotensin Converting Enzyme 1 Antibody [ACE/3763].



SDS-PAGE analysis of Anti-Angiotensin Converting Enzyme 1 Antibody [ACE/3763] under non-reduced and reduced conditions; showing intact IgG and intact heavy and light chains, respectively. SDS-PAGE analysis confirms the integrity and purity of the antibody.



Western blot analysis of human kidney tissue lysate using Anti-Angiotensin Converting Enzyme 1 Antibody [ACE/3763].