

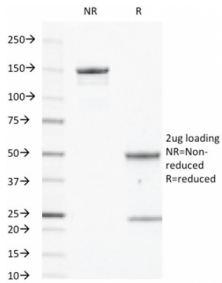
Anti-EGFR Antibody [GFR450] (A248398)

Specifications:

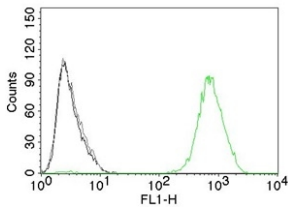
Name:	Anti-EGFR Antibody [GFR450]
Description:	Mouse monoclonal [GFR450] antibody to EGFR.
Specificity:	This antibody recognizes a protein of 170kDa, identified as EGFR. EGFR is type I receptor tyrosine kinase with sequence homology to erbB-1, -2, -3 -4 or HER-1, -2, -3 -4. It binds to Epidermal Growth Factor (EGF), Transforming Growth Factor- α (TGF- α), Heparin-binding EGF (HB-EGF), amphiregulin, betacellulin and epiregulin. EGFR is overexpressed in tumors of breast, brain, bladder, lung, gastric, head neck, esophagus, cervix, vulva, ovary, and endometrium. It is predominantly present in squamous cell carcinomas.
Applications:	Flow Cytometry, IF
Recommended Dilutions:	Flow Cytometry: 1-2 μ g/million cells, IF: 1-2 μ g/ml
Reactivity:	Human
Cross Reactivity:	This antibody does not cross react with Mouse.
Immunogen:	Recombinant extracellular domain of human EGFR protein.
Host:	Mouse
Clonality:	Monoclonal
Clone ID:	GFR450
Isotype:	IgG2a
Light Chains:	kappa
Conjugate:	Unconjugated
Purification:	Protein A/G chromatography.
Concentration:	200 μ g/ml
Product Form:	Liquid
Formulation:	Supplied in 10mM Phosphate Buffered Saline with 0.05% BSA and 0.05% Sodium Azide.
Storage:	Shipped at 4°C. Upon delivery aliquot and store at -20°C. Avoid freeze / thaw cycles.
General Notes:	This monoclonal antibody is also available in a different formulation without BSA and Sodium Azide - Anti-EGFR Antibody [GFR450] - BSA and Azide free (A251580).
Disclaimer:	This product is for research use only. It is not intended for diagnostic or therapeutic use.

Anti-EGFR Antibody [GFR450] (A248398)

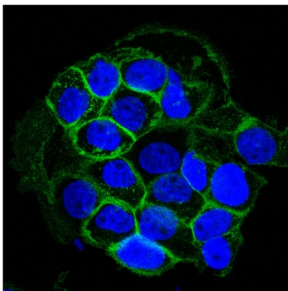
Images:



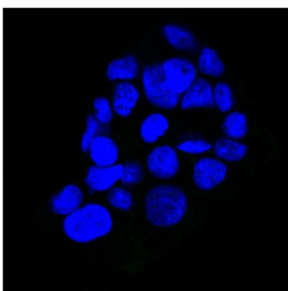
SDS-PAGE analysis of Anti-EGFR Antibody [GFR450] under non-reduced and reduced conditions; showing intact IgG and intact heavy and light chains, respectively. SDS-PAGE analysis confirms the integrity and purity of the antibody.



Flow cytometric analysis of A431 cells labeling EGFR with Anti-EGFR Antibody [GFR450] (AF488) (Green). Cells alone (Black). Isotype Control (Grey).



Immunofluorescent analysis of A431 cells stained with Anti-EGFR Antibody [GFR450] (AF488) (Green). DAPI was used to stain the cell nuclei (Blue).



Negative Control: Immunofluorescent analysis of A431 cells using Mouse IgG2a (AF488) - Isotype Control (Green). DAPI was used to stain the cell nuclei (Blue).