

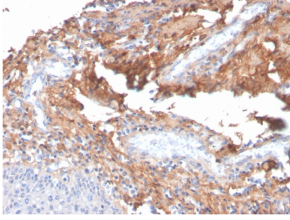
Anti-Fibronectin Antibody [C6F10] (A248583)

Specifications:

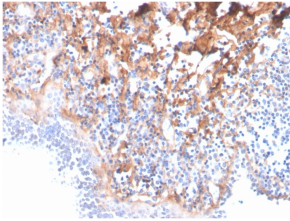
| | |
|------------------------|------------------------------------------------------------------------------------------------------------------------------------------------------------------------|
| Name: | Anti-Fibronectin Antibody [C6F10] |
| Description: | Mouse monoclonal [C6F10] antibody to Fibronectin. |
| Applications: | IP, WB, IF, IHC-P |
| Recommended Dilutions: | IP: 1-2 µg / 500 µg protein lysate, WB: 1-2 µg/ml, IF: 1-2 µg/ml, IHC-P: 1-2 µg/ml |
| Reactivity: | Human, Monkey, Porcine, Bovine, Equine, Avian, Amphibian |
| Immunogen: | Human plasma fibronectin. |
| Host: | Mouse |
| Clonality: | Monoclonal |
| Clone ID: | C6F10 |
| Isotype: | IgG1 |
| Light Chains: | kappa |
| Conjugate: | Unconjugated |
| Purification: | Protein A/G chromatography. |
| Concentration: | 200 µg/ml |
| Product Form: | Liquid |
| Formulation: | Supplied in 10mM Phosphate Buffered Saline with 0.05% BSA and 0.05% Sodium Azide. |
| Storage: | Shipped at 4°C. Upon delivery aliquot and store at -20°C. Avoid freeze / thaw cycles. |
| General Notes: | This monoclonal antibody is also available in a different formulation without BSA and Sodium Azide - Anti-Fibronectin Antibody [C6F10] - BSA and Azide free (A251765). |
| Disclaimer: | This product is for research use only. It is not intended for diagnostic or therapeutic use. |

Anti-Fibronectin Antibody [C6F10] (A248583)

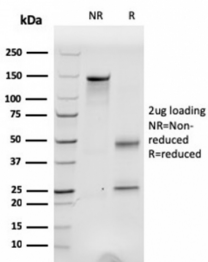
Images:



Immunohistochemical analysis of formalin-fixed, paraffin-embedded human tonsil using Anti-Fibronectin Antibody [C6F10].



Immunohistochemical analysis of formalin-fixed, paraffin-embedded human tonsil using Anti-Fibronectin Antibody [C6F10].



SDS-PAGE analysis of Anti-Fibronectin Antibody [C6F10] under non-reduced and reduced conditions; showing intact IgG and intact heavy and light chains, respectively. SDS-PAGE analysis confirms the integrity and purity of the antibody.