

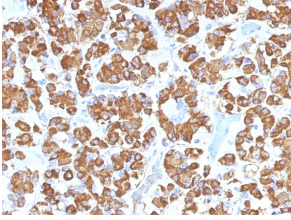
Anti-Growth Hormone Antibody [GH/1450] (A248714)

Specifications:

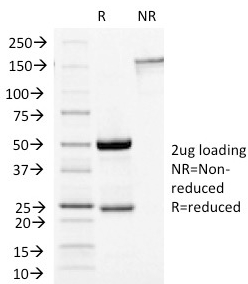
| | |
|------------------------|---|
| Name: | Anti-Growth Hormone Antibody [GH/1450] |
| Description: | Mouse monoclonal [GH/1450] antibody to Growth Hormone. |
| Applications: | IHC-P |
| Recommended Dilutions: | IHC-P: 1-2 µg/ml |
| Reactivity: | Human |
| Immunogen: | Recombinant fragment, within amino acids 58-187, of human Growth Hormone. The exact sequence is proprietary. |
| Host: | Mouse |
| Clonality: | Monoclonal |
| Clone ID: | GH/1450 |
| Isotype: | IgG2b |
| Light Chains: | kappa |
| Conjugate: | Unconjugated |
| Purification: | Protein A/G chromatography. |
| Concentration: | 200 µg/ml |
| Product Form: | Liquid |
| Formulation: | Supplied in 10mM Phosphate Buffered Saline with 0.05% BSA and 0.05% Sodium Azide. |
| Storage: | Shipped at 4°C. Upon delivery aliquot and store at -20°C. Avoid freeze / thaw cycles. |
| General Notes: | This monoclonal antibody is also available in a different formulation without BSA and Sodium Azide - Anti-Growth Hormone Antibody [GH/1450] - BSA and Azide free (A251896). |
| Disclaimer: | This product is for research use only. It is not intended for diagnostic or therapeutic use. |

Anti-Growth Hormone Antibody [GH/1450] (A248714)

Images:



Immunohistochemical analysis of formalin-fixed, paraffin-embedded human pituitary using Anti-Growth Hormone Antibody [GH/1450].



SDS-PAGE analysis of Anti-Growth Hormone Antibody [GH/1450] under non-reduced and reduced conditions; showing intact IgG and intact heavy and light chains, respectively. SDS-PAGE analysis confirms the integrity and purity of the antibody.