

## Anti-CD13 Antibody [WM15] (A248759)

### Specifications:

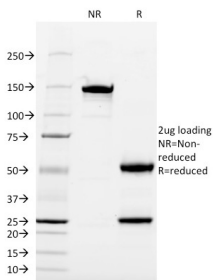
Name:	Anti-CD13 Antibody [WM15]
Description:	Mouse monoclonal [WM15] antibody to CD13.
Specificity:	This antibody recognizes an integral membrane glycoprotein of 150kDa, identified as CD13 (also known as aminopeptidase-N). The antibody This antibody recognizes an extracellular epitope. The CD13 antigen is present on most cells of myeloid origin including granulocytes, monocytes, mast cells, and GM-progenitor cells. It is also expressed by the majority of AML, CML in myeloid blast crisis, and in a smaller fraction of lymphoid leukemias. CD13 is absent from normal lymphocytes, platelets and erythrocytes. CD13 is also present on fibroblasts; endothelial cells, epithelial cells from renal proximal tubules and intestinal brush border, bone marrow stromal cells, osteoclasts, and cells lining bile duct canaliculi. CD13 is identical to aminopeptidase N (APN), a prominent membrane-bound metalloprotease present on the surface of intestinal brush border and renal tubules. CD13 plays a role in metabolism of biologically active peptides, in phagocytosis, and in bactericidal/tumoricidal activities. It also serves as a receptor for human coronaviruses (HCV). The lineage-restricted pattern of expression of CD13 within the hemopoietic compartment suggests that it may be important in myeloid cell differentiation.
Applications:	Flow Cytometry, IF, IHC-Fr
Recommended Dilutions:	Flow Cytometry: 1-2 µg/million cells, IF: 1-2 µg/ml, IHC-Fr: 1-2 µg/ml
Reactivity:	Human
Immunogen:	Human AML cells.
Host:	Mouse
Clonality:	Monoclonal
Clone ID:	WM15
Isotype:	IgG1
Light Chains:	kappa
Conjugate:	Unconjugated
Purification:	Protein A/G chromatography.
Concentration:	200 µg/ml
Product Form:	Liquid
Formulation:	Supplied in 10mM Phosphate Buffered Saline with 0.05% BSA and 0.05% Sodium Azide.

## Anti-CD13 Antibody [WM15] (A248759)

### Specifications continued:

Storage:	Shipped at 4°C. Upon delivery aliquot and store at -20°C. Avoid freeze / thaw cycles.
General Notes:	This monoclonal antibody is also available in a different formulation without BSA and Sodium Azide - Anti-CD13 Antibody [WM15] - BSA and Azide free (A251939).
Disclaimer:	This product is for research use only. It is not intended for diagnostic or therapeutic use.

### Images:



SDS-PAGE analysis of Anti-CD13 Antibody [WM15] under non-reduced and reduced conditions; showing intact IgG and intact heavy and light chains, respectively. SDS-PAGE analysis confirms the integrity and purity of the antibody.