

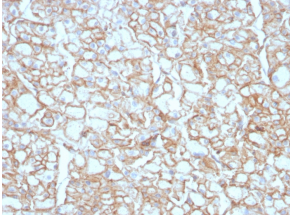
## Anti-PD-L1 Antibody [PDL1/4451R] (A248775)

### Specifications:

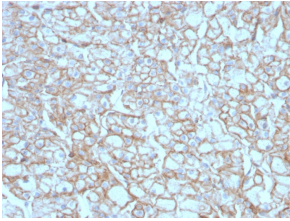
Name:	Anti-PD-L1 Antibody [PDL1/4451R]
Description:	Recombinant rabbit monoclonal [PDL1/4451R] antibody to PD-L1.
Applications:	WB, Flow Cytometry, IF, IHC-P
Recommended Dilutions:	WB: 1-2 µg/ml, Flow Cytometry: 1-2 µg/million cells, IF: 1-2 µg/ml, IHC-P: 1-2 µg/ml
Reactivity:	Human, Mouse
Immunogen:	Recombinant fragment, around amino acids 39-191, of human PD-L1 protein. The exact sequence is proprietary.
Host:	Rabbit
Clonality:	Monoclonal
Clone ID:	PDL1/4451R
Isotype:	IgG
Conjugate:	Unconjugated
Purification:	Protein A/G chromatography.
Concentration:	200 µg/ml
Product Form:	Liquid
Formulation:	Supplied in 10mM Phosphate Buffered Saline with 0.05% BSA and 0.05% Sodium Azide.
Storage:	Shipped at 4°C. Upon delivery aliquot and store at -20°C. Avoid freeze / thaw cycles.
General Notes:	This monoclonal antibody is also available in a different formulation without BSA and Sodium Azide - Anti-PD-L1 Antibody [PDL1/4451R] - BSA and Azide free (A251955).
Disclaimer:	This product is for research use only. It is not intended for diagnostic or therapeutic use.

## Anti-PD-L1 Antibody [PDL1/4451R] (A248775)

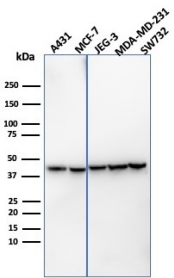
### Images:



Immunohistochemical analysis of formalin-fixed, paraffin-embedded human lung squamous cell carcinoma using Anti-PD-L1 Antibody [PDL1/4451R].



Immunohistochemical analysis of formalin-fixed, paraffin-embedded human lung squamous cell carcinoma using Anti-PD-L1 Antibody [PDL1/4451R].



Western blot analysis of A431, MCF-7, JEG-3, MDA-MB231, and SW732 cell lysates using Anti-PD-L1 Antibody [PDL1/4451R].