

Anti-HSP60 Antibody [LK1] (A248883)

Specifications:

| | |
|------------------------|--|
| Name: | Anti-HSP60 Antibody [LK1] |
| Description: | Mouse monoclonal [LK1] antibody to HSP60. |
| Specificity: | This antibody recognizes a 60kDa protein, identified as the heat shock protein 60 (hsp60). Its epitope is localized between aa 383-447 of human hsp60. A wide variety of environmental and pathophysiological stressful conditions trigger the synthesis of a family of proteins known as heat shock proteins (hsp s), more appropriately called as stress response proteins (srp s). Hsp60 is a potential antigen in a number of autoimmune diseases. In human arthritis and in experimentally induced arthritis in animals, disease development coincides with the development of immune reactivity directed against not only bacterial hsp60, but also against its mammalian homolog. |
| Applications: | Flow Cytometry, IF, WB, IHC-P |
| Recommended Dilutions: | Flow Cytometry: 1-2 µg/million cells, IF: 1-2 µg/ml, WB: 0.25-0.5 µg/ml, IHC-P: 1-2 µg/ml |
| Reactivity: | Human, Mouse, Rat, Hamster, Sheep, Rabbit, Bovine, Canine, Porcine, Monkey, Chicken, Xenopus laevis, Drosophila |
| Cross Reactivity: | This antibody does not cross react with bacteria, helminths, or spinach. |
| Immunogen: | Recombinant human HSP60 protein. |
| Host: | Mouse |
| Clonality: | Monoclonal |
| Clone ID: | LK1 |
| Isotype: | IgG1 |
| Light Chains: | kappa |
| Conjugate: | Unconjugated |
| Purification: | Protein A/G chromatography. |
| Concentration: | 200 µg/ml |
| Product Form: | Liquid |
| Formulation: | Supplied in 10mM Phosphate Buffered Saline with 0.05% BSA and 0.05% Sodium Azide. |
| Storage: | Shipped at 4°C. Upon delivery aliquot and store at -20°C. Avoid freeze / thaw cycles. |

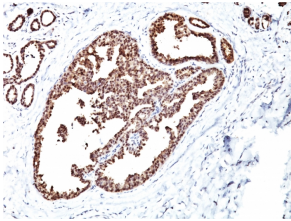
Anti-HSP60 Antibody [LK1] (A248883)

Specifications continued:

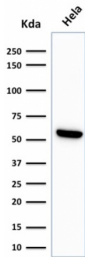
General Notes: This monoclonal antibody is also available in a different formulation without BSA and Sodium Azide - Anti-HSP60 Antibody [LK1] - BSA and Azide free (A252063).

Disclaimer: This product is for research use only. It is not intended for diagnostic or therapeutic use.

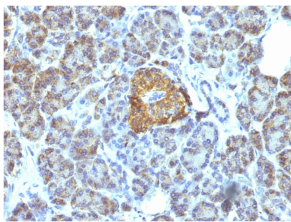
Images:



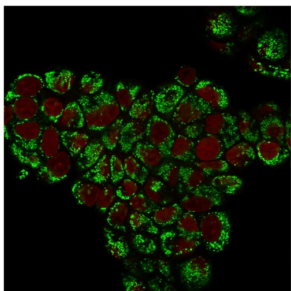
Immunohistochemical analysis of formalin-fixed, paraffin-embedded human breast carcinoma using Anti-HSP60 Antibody [LK1].



Western blot analysis of HeLa cell lysate using Anti-HSP60 Antibody [LK1].



Immunohistochemical analysis of formalin-fixed, paraffin-embedded human pancreas using Anti-HSP60 Antibody [LK1].



Immunofluorescent analysis of PFA fixed MCF-7 cells stained with Anti-HSP60 Antibody [LK1] followed by Goat Anti-Mouse IgG (CF® 488) (Green). Nuclear counterstain is RedDot.