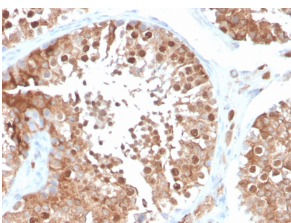


Anti-Inhibin alpha Antibody [INHA/4266] (A249034)

Specifications:

Name:	Anti-Inhibin alpha Antibody [INHA/4266]
Description:	Mouse monoclonal [INHA/4266] antibody to Inhibin alpha.
Applications:	IHC-P
Recommended Dilutions:	IHC-P: 1-2 µg/ml
Reactivity:	Human
Immunogen:	Synthetic peptide, within amino acids 73-96, of alpha-subunit of human Inhibin A protein. The exact sequence is proprietary.
Host:	Mouse
Clonality:	Monoclonal
Clone ID:	INHA/4266
Isotype:	IgG2a
Conjugate:	Unconjugated
Purification:	Protein A/G chromatography.
Concentration:	200 µg/ml
Product Form:	Liquid
Formulation:	Supplied in 10mM Phosphate Buffered Saline with 0.05% BSA and 0.05% Sodium Azide.
Storage:	Shipped at 4°C. Upon delivery aliquot and store at -20°C. Avoid freeze / thaw cycles.
General Notes:	This monoclonal antibody is also available in a different formulation without BSA and Sodium Azide - Anti-Inhibin alpha Antibody [INHA/4266] - BSA and Azide free (A252214).
Disclaimer:	This product is for research use only. It is not intended for diagnostic or therapeutic use.

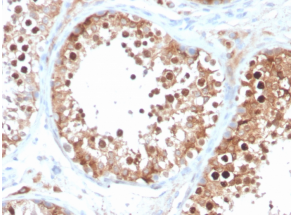
Images:



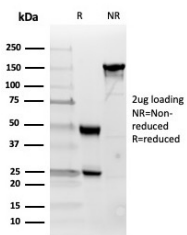
Immunohistochemical analysis of formalin-fixed, paraffin-embedded human testis using Anti-Inhibin alpha Antibody [INHA/4266].

Anti-Inhibin alpha Antibody [INHA/4266] (A249034)

Images continued:



Immunohistochemical analysis of formalin-fixed, paraffin-embedded human testis using Anti-Inhibin alpha Antibody [INHA/4266].



SDS-PAGE analysis of Anti-Inhibin alpha Antibody [INHA/4266] under non-reduced and reduced conditions; showing intact IgG and intact heavy and light chains, respectively. SDS-PAGE analysis confirms the integrity and purity of the antibody.