

Anti-Integrin alpha E Antibody [ITGAE/2063] (A249058)

Specifications:

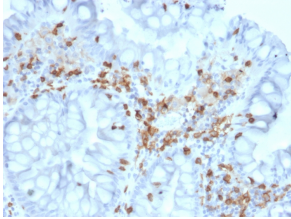
Name:	Anti-Integrin alpha E Antibody [ITGAE/2063]
Description:	Mouse monoclonal [ITGAE/2063] antibody to Integrin alpha E.
Specificity:	This antibody recognizes a protein of 150kDa, identified as CD103, which is the alpha-E integrin subunit of the heterodimeric alpha-E beta-7 (aEb7) integrin belonging to a small beta-7 integrin subfamily. CD103 is expressed on more than 95% of intraepithelial CD8+ cells and on 40% of mucosa-associated T cells, whereas less than 2% of resting blood lymphocytes are CD103-positive. In several malignant conditions, such as T-cell lymphomas and hairy cell leukemia (HCL), the cells express CD103. Antibody to CD103 is an extremely useful addition to the IHC panel for the diagnosis of hairy cell leukemia (HCL).
Applications:	IHC-P
Recommended Dilutions:	IHC-P: 1-2 µg/ml
Reactivity:	Human
Immunogen:	Recombinant fragment of human ITGAE protein. The exact sequence is proprietary.
Host:	Mouse
Clonality:	Monoclonal
Clone ID:	ITGAE/2063
Isotype:	IgG2c
Light Chains:	kappa
Conjugate:	Unconjugated
Purification:	Protein A/G chromatography.
Concentration:	200 µg/ml
Product Form:	Liquid
Formulation:	Supplied in 10mM Phosphate Buffered Saline with 0.05% BSA and 0.05% Sodium Azide.
Storage:	Shipped at 4°C. Upon delivery aliquot and store at -20°C. Avoid freeze / thaw cycles.
General Notes:	This monoclonal antibody is also available in a different formulation without BSA and Sodium Azide - Anti-Integrin alpha E Antibody [ITGAE/2063] - BSA and Azide free (A252238).

Anti-Integrin alpha E Antibody [ITGAE/2063] (A249058)

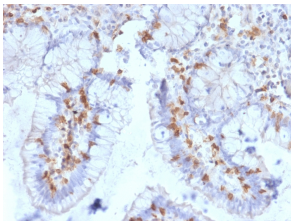
Specifications continued:

Disclaimer: This product is for research use only. It is not intended for diagnostic or therapeutic use.

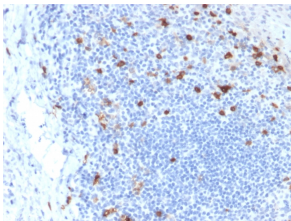
Images:



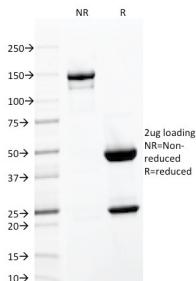
Immunohistochemical analysis of formalin-fixed, paraffin-embedded human colon using Anti-Integrin alpha E Antibody [ITGAE/2063].



Immunohistochemical analysis of formalin-fixed, paraffin-embedded human small intestine using Anti-Integrin alpha E Antibody [ITGAE/2063].



Immunohistochemical analysis of formalin-fixed, paraffin-embedded human tonsil using Anti-Integrin alpha E Antibody [ITGAE/2063].



SDS-PAGE analysis of Anti-Integrin alpha E Antibody [ITGAE/2063] under non-reduced and reduced conditions; showing intact IgG and intact heavy and light chains, respectively. SDS-PAGE analysis confirms the integrity and purity of the antibody.