

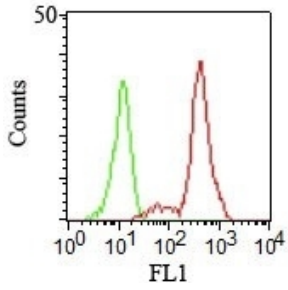
## Anti-CD11c Antibody [HC1/1] (A249071)

### Specifications:

|                        |  |
|------------------------|--|
| Name:                  | Anti-CD11c Antibody [HC1/1]  |
| Description:           | Mouse monoclonal [HC1/1] antibody to CD11c.  |
| Applications:          | Flow Cytometry, IF, Functional Studies   |
| Recommended Dilutions: | Flow Cytometry: 1-2 µg/million cells, IF: 1-2 µg/ml  |
| Reactivity:            | Human  |
| Immunogen:             | Human monocytic U937 phorbol ester-treated cells.  |
| Host:                  | Mouse  |
| Clonality:             | Monoclonal   |
| Clone ID:              | HC1/1  |
| Isotype:               | IgG1   |
| Light Chains:          | kappa  |
| Conjugate:             | Unconjugated   |
| Purification:          | Protein A/G chromatography.  |
| Concentration:         | 200 µg/ml  |
| Product Form:          | Liquid   |
| Formulation:           | Supplied in 10mM Phosphate Buffered Saline with 0.05% BSA and 0.05% Sodium Azide.  |
| Storage:               | Shipped at 4°C. Upon delivery aliquot and store at -20°C. Avoid freeze / thaw cycles.  |
| General Notes:         | This monoclonal antibody is also available in a different formulation without BSA and Sodium Azide - Anti-CD11c Antibody [HC1/1] - BSA and Azide free (A252251). |
| Disclaimer:            | This product is for research use only. It is not intended for diagnostic or therapeutic use.   |

## Anti-CD11c Antibody [HC1/1] (A249071)

Images:



Flow cytometric analysis of human PBMCs using Anti-CD11c Antibody [HC1/1].