

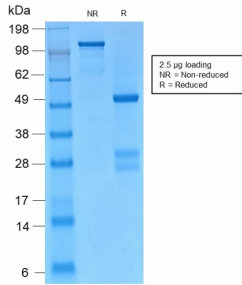
Anti-gamma Catenin Antibody [CTNG/2155R] (A249101)

Specifications:

Name:	Anti-gamma Catenin Antibody [CTNG/2155R]
Description:	Recombinant rabbit monoclonal [CTNG/2155R] antibody to gamma Catenin.
Applications:	ELISA, Flow Cytometry, IF, WB
Recommended Dilutions:	Flow Cytometry: 1-2 µg/million cells, IF: 1-2 µg/ml, WB: 1-2 µg/ml
Reactivity:	Human, Mouse, Feline, Rat, Chicken, Bovine, Canine
Immunogen:	Recombinant full-length chicken gamma Catenin protein.
Host:	Rabbit
Clonality:	Monoclonal
Clone ID:	CTNG/2155R
Isotype:	IgG
Conjugate:	Unconjugated
Purification:	Protein A/G chromatography.
Concentration:	200 µg/ml
Product Form:	Liquid
Formulation:	Supplied in 10mM Phosphate Buffered Saline with 0.05% BSA and 0.05% Sodium Azide.
Storage:	Shipped at 4°C. Upon delivery aliquot and store at -20°C. Avoid freeze / thaw cycles.
General Notes:	This monoclonal antibody is also available in a different formulation without BSA and Sodium Azide - Anti-gamma Catenin Antibody [CTNG/2155R] - BSA and Azide free (A252281).
Disclaimer:	This product is for research use only. It is not intended for diagnostic or therapeutic use.

Anti-gamma Catenin Antibody [CTNG/2155R] (A249101)

Images:



SDS-PAGE analysis of Anti-gamma Catenin Antibody [CTNG/2155R] under non-reduced and reduced conditions; showing intact IgG and intact heavy and light chains, respectively. SDS-PAGE analysis confirms the integrity and purity of the antibody.