

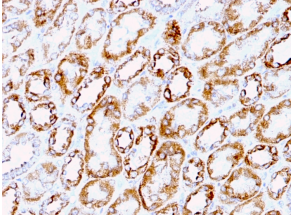
Anti-Laminin gamma 1 Antibody [A5] (A249222)

Specifications:

Name:	Anti-Laminin gamma 1 Antibody [A5]
Description:	Rat monoclonal [A5] antibody to Laminin gamma 1.
Specificity:	This antibody reacts with laminin B2/1 chain (~ 210 kDa) and does not cross-react with other basement membrane components or fibronectin. This antibody stains uniformly all human and murine basement membranes.
Applications:	Flow Cytometry, IF, IHC-P
Recommended Dilutions:	Flow Cytometry: 1-2 µg/million cells, IF: 1-2 µg/ml, IHC-P: 1-2 µg/ml
Reactivity:	Human, Mouse
Immunogen:	Murine EHS laminin preparation.
Host:	Rat
Clonality:	Monoclonal
Clone ID:	A5
Isotype:	IgG2a
Light Chains:	kappa
Conjugate:	Unconjugated
Purification:	Protein A/G chromatography.
Concentration:	200 µg/ml
Product Form:	Liquid
Formulation:	Supplied in 10mM Phosphate Buffered Saline with 0.05% BSA and 0.05% Sodium Azide.
Storage:	Shipped at 4°C. Upon delivery aliquot and store at -20°C. Avoid freeze / thaw cycles.
General Notes:	This monoclonal antibody is also available in a different formulation without BSA and Sodium Azide - Anti-Laminin gamma 1 Antibody [A5] - BSA and Azide free (A252402).
Disclaimer:	This product is for research use only. It is not intended for diagnostic or therapeutic use.

Anti-Laminin gamma 1 Antibody [A5] (A249222)

Images:



Immunohistochemical analysis of formalin-fixed, paraffin-embedded human renal cell carcinoma using Anti-Laminin gamma 1 Antibody [A5].