

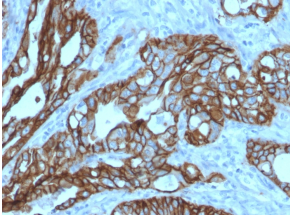
Anti-TROP2 Antibody [TACSTD2/2152] (A249240)

Specifications:

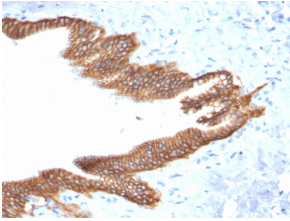
Name:	Anti-TROP2 Antibody [TACSTD2/2152]
Description:	Mouse monoclonal [TACSTD2/2152] antibody to TROP2.
Specificity:	TACSTD2 is a cell surface glycoprotein receptor. It is a single pass type I membrane protein containing one thyroglobulin type-1 domain, an epidermal growth factor-like repeat, a phosphatidylinositol binding site and tyrosine phosphorylation sites near the C-terminus. It plays a role in transducing intracellular calcium signals. It is expressed in trophoblast cells, cornea and multi-stratified epithelia. It is also highly expressed in several types of tumors and is involved in regulating the growth of carcinoma cells.
Applications:	IF, IHC-P
Recommended Dilutions:	IF: 1-2 µg/ml, IHC-P: 1-2 µg/ml
Reactivity:	Human
Immunogen:	Recombinant fragment, around amino acids 31-274, of human TACSTD2 protein. The exact sequence is proprietary.
Host:	Mouse
Clonality:	Monoclonal
Clone ID:	TACSTD2/2152
Isotype:	IgG1
Light Chains:	kappa
Conjugate:	Unconjugated
Purification:	Protein A/G chromatography.
Concentration:	200 µg/ml
Product Form:	Liquid
Formulation:	Supplied in 10mM Phosphate Buffered Saline with 0.05% BSA and 0.05% Sodium Azide.
Storage:	Shipped at 4°C. Upon delivery aliquot and store at -20°C. Avoid freeze / thaw cycles.
General Notes:	This monoclonal antibody is also available in a different formulation without BSA and Sodium Azide - Anti-TROP2 Antibody [TACSTD2/2152] - BSA and Azide free (A252420).
Disclaimer:	This product is for research use only. It is not intended for diagnostic or therapeutic use.

Anti-TROP2 Antibody [TACSTD2/2152] (A249240)

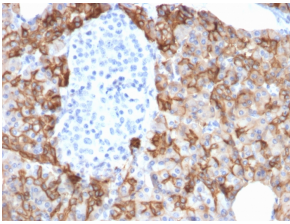
Images:



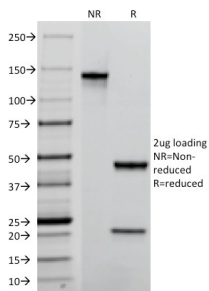
Immunohistochemical analysis of formalin-fixed, paraffin-embedded human colon carcinoma using Anti-TROP2 Antibody [TACSTD2/2152].



Immunohistochemical analysis of formalin-fixed, paraffin-embedded human pancreatic carcinoma using Anti-TROP2 Antibody [TACSTD2/2152].



Immunohistochemical analysis of formalin-fixed, paraffin-embedded human pancreatic carcinoma using Anti-TROP2 Antibody [TACSTD2/2152].



SDS-PAGE analysis of Anti-TROP2 Antibody [TACSTD2/2152] under non-reduced and reduced conditions; showing intact IgG and intact heavy and light chains, respectively. SDS-PAGE analysis confirms the integrity and purity of the antibody.