

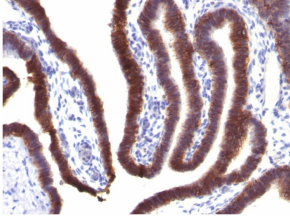
Anti-EpCAM Antibody [EGP40/1373] (A249247)

Specifications:

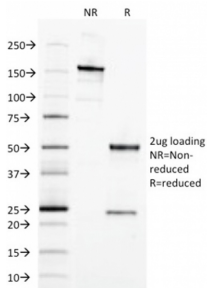
| | |
|------------------------|---|
| Name: | Anti-EpCAM Antibody [EGP40/1373] |
| Description: | Mouse monoclonal [EGP40/1373] antibody to EpCAM. |
| Applications: | Flow Cytometry, WB, IF, IHC-P |
| Recommended Dilutions: | Flow Cytometry: 1-2 µg/million cells, WB: 1-2 µg/ml, IF: 1-3µg/ml, IHC-P: 1-2 µg/ml |
| Reactivity: | Human |
| Immunogen: | Recombinant fragment, around amino acids 77-202, of human EpCAM protein. The exact sequence is proprietary. |
| Host: | Mouse |
| Clonality: | Monoclonal |
| Clone ID: | EGP40/1373 |
| Isotype: | IgG2b |
| Light Chains: | kappa |
| Conjugate: | Unconjugated |
| Purification: | Protein A/G chromatography. |
| Concentration: | 200 µg/ml |
| Product Form: | Liquid |
| Formulation: | Supplied in 10mM Phosphate Buffered Saline with 0.05% BSA and 0.05% Sodium Azide. |
| Storage: | Shipped at 4°C. Upon delivery aliquot and store at -20°C. Avoid freeze / thaw cycles. |
| General Notes: | This monoclonal antibody is also available in a different formulation without BSA and Sodium Azide - Anti-EpCAM Antibody [EGP40/1373] - BSA and Azide free (A252427). |
| Disclaimer: | This product is for research use only. It is not intended for diagnostic or therapeutic use. |

Anti-EpCAM Antibody [EGP40/1373] (A249247)

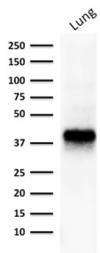
Images:



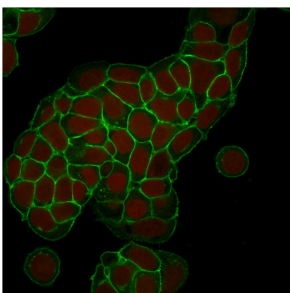
Immunohistochemical analysis of formalin-fixed, paraffin-embedded human fallopian tube using Anti-EpCAM Antibody [EGP40/1373].



SDS-PAGE analysis of Anti-EpCAM Antibody [EGP40/1373] under non-reduced and reduced conditions; showing intact IgG and intact heavy and light chains, respectively. SDS-PAGE analysis confirms the integrity and purity of the antibody.



Western blot analysis of human lung lysate using Anti-EpCAM Antibody [EGP40/1373].



Immunofluorescent analysis of MCF-7 cells stained with Anti-EpCAM Antibody [EGP40/1373] (CF® 488) (Green). Nuclear counterstain is RedDot.