

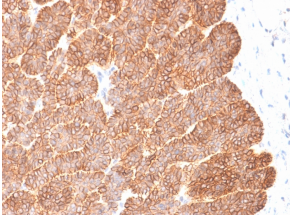
Anti-EpCAM Antibody [EGP40/2041R] (A249266)

Specifications:

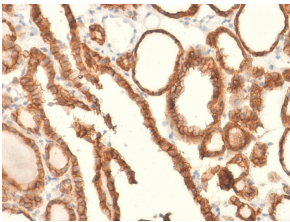
Name:	Anti-EpCAM Antibody [EGP40/2041R]
Description:	Recombinant rabbit monoclonal [EGP40/2041R] antibody to EpCAM.
Specificity:	The epitope of this antibody is located between amino acids 202-212 of EpCam.
Applications:	WB, IHC-P
Recommended Dilutions:	WB: 1-2 µg/ml, IHC-P: 1-2 µg/ml
Reactivity:	Human
Immunogen:	Recombinant fragment, around amino acids 100-224, of human EpCAM protein. The exact sequence is proprietary.
Host:	Rabbit
Clonality:	Monoclonal
Clone ID:	EGP40/2041R
Isotype:	IgG
Conjugate:	Unconjugated
Purification:	Protein A chromatography.
Concentration:	200 µg/ml
Product Form:	Liquid
Formulation:	Supplied in 10mM Phosphate Buffered Saline with 0.05% BSA and 0.05% Sodium Azide.
Storage:	Shipped at 4°C. Upon delivery aliquot and store at -20°C. Avoid freeze / thaw cycles.
General Notes:	This monoclonal antibody is also available in a different formulation without BSA and Sodium Azide - Anti-EpCAM Antibody [EGP40/2041R] - BSA and Azide free (A252446).
Disclaimer:	This product is for research use only. It is not intended for diagnostic or therapeutic use.

Anti-EpCAM Antibody [EGP40/2041R] (A249266)

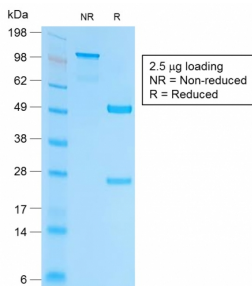
Images:



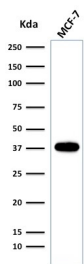
Immunohistochemical analysis of formalin-fixed, paraffin-embedded human basal cell carcinoma using Anti-EpCAM Antibody [EGP40/2041R].



Immunohistochemical analysis of formalin-fixed, paraffin-embedded human thyroid carcinoma using Anti-EpCAM Antibody [EGP40/2041R].



SDS-PAGE analysis of Anti-EpCAM Antibody [EGP40/2041R] under non-reduced and reduced conditions; showing intact IgG and intact heavy and light chains, respectively. SDS-PAGE analysis confirms the integrity and purity of the antibody.



Western blot analysis of MCF-7 cell lysate using Anti-EpCAM Antibody [EGP40/2041R].