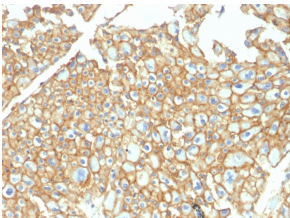


Anti-EpCAM Antibody (A249269)

Specifications:

Name:	Anti-EpCAM Antibody
Description:	Rabbit polyclonal antibody to EpCAM.
Applications:	Flow Cytometry, IF, WB, IHC
Recommended Dilutions:	Flow Cytometry: 1-2 µg/million cells, IF: 1-2 µg/ml, WB: 1-2 µg/ml, IHC: 1-2 µg/ml
Reactivity:	Human
Cross Reactivity:	This antibody does not cross react with Mouse or Rat.
Immunogen:	Recombinant human TACSTD1 protein.
Host:	Rabbit
Clonality:	Polyclonal
Isotype:	IgG
Conjugate:	Unconjugated
Purification:	Protein A chromatography.
Concentration:	200 µg/ml
Product Form:	Liquid
Formulation:	Supplied in 10mM Phosphate Buffered Saline with 0.05% BSA and 0.05% Sodium Azide.
Storage:	Shipped at 4°C. Upon delivery aliquot and store at -20°C. Avoid freeze / thaw cycles.
General Notes:	This monoclonal antibody is also available in a different formulation without BSA and Sodium Azide - Anti-EpCAM Antibody - BSA and Azide free (A252449).
Disclaimer:	This product is for research use only. It is not intended for diagnostic or therapeutic use.

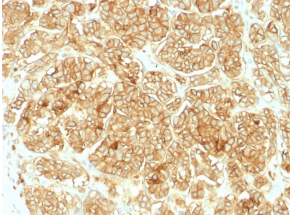
Images:



Immunohistochemical analysis of formalin-fixed, paraffin-embedded human renal cell carcinoma using Anti-EpCAM Antibody.

Anti-EpCAM Antibody (A249269)

Images continued:



Immunohistochemical analysis of formalin-fixed, paraffin-embedded human renal cell carcinoma using Anti-EpCAM Antibody.