

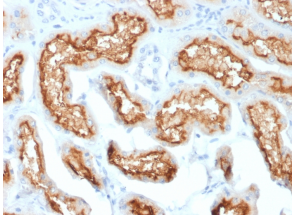
## Anti-CD10 Antibody [MME/1870] (A249353)

### Specifications:

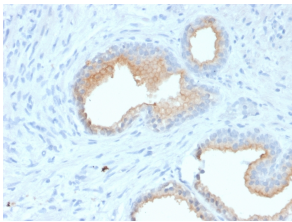
Name:	Anti-CD10 Antibody [MME/1870]
Description:	Mouse monoclonal [MME/1870] antibody to CD10.
Applications:	WB, IHC-P
Recommended Dilutions:	WB: 1-2 µg/ml, IHC-P: 1-2 µg/ml
Reactivity:	Human
Immunogen:	Recombinant fragment, around amino acids 297-483, of human CD10 protein. The exact sequence is proprietary.
Host:	Mouse
Clonality:	Monoclonal
Clone ID:	MME/1870
Isotype:	IgG2c
Light Chains:	kappa
Conjugate:	Unconjugated
Purification:	Protein A/G chromatography.
Concentration:	200 µg/ml
Product Form:	Liquid
Formulation:	Supplied in 10mM Phosphate Buffered Saline with 0.05% BSA and 0.05% Sodium Azide.
Storage:	Shipped at 4°C. Upon delivery aliquot and store at -20°C. Avoid freeze / thaw cycles.
General Notes:	This monoclonal antibody is also available in a different formulation without BSA and Sodium Azide - Anti-CD10 Antibody [MME/1870] - BSA and Azide free (A252533).
Disclaimer:	This product is for research use only. It is not intended for diagnostic or therapeutic use.

## Anti-CD10 Antibody [MME/1870] (A249353)

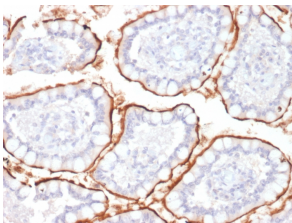
### Images:



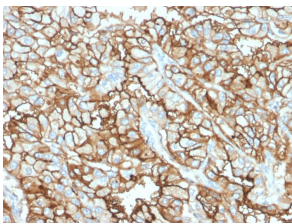
Immunohistochemical analysis of formalin-fixed, paraffin-embedded human kidney using Anti-CD10 Antibody [MME/1870].



Immunohistochemical analysis of formalin-fixed, paraffin-embedded human prostate using Anti-CD10 Antibody [MME/1870].



Immunohistochemical analysis of formalin-fixed, paraffin-embedded human colon using Anti-CD10 Antibody [MME/1870].



Immunohistochemical analysis of formalin-fixed, paraffin-embedded human renal cell carcinoma using Anti-CD10 Antibody [MME/1870].