

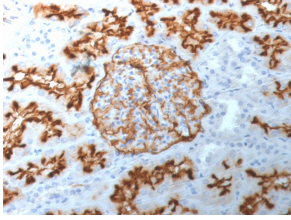
Anti-CD10 Antibody [MME/1892] (A249355)

Specifications:

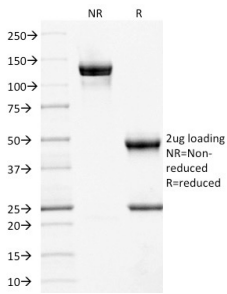
Name:	Anti-CD10 Antibody [MME/1892]
Description:	Mouse monoclonal [MME/1892] antibody to CD10.
Applications:	ELISA, WB, IHC-P
Recommended Dilutions:	WB: 1-2 µg/ml, IHC-P: 1-2 µg/ml
Reactivity:	Human
Immunogen:	Recombinant fragment, around amino acids 297-483, of human CD10 protein. The exact sequence is proprietary.
Host:	Mouse
Clonality:	Monoclonal
Clone ID:	MME/1892
Isotype:	IgG2c
Light Chains:	kappa
Conjugate:	Unconjugated
Purification:	Protein A/G chromatography.
Concentration:	200 µg/ml
Product Form:	Liquid
Formulation:	Supplied in 10mM Phosphate Buffered Saline with 0.05% BSA and 0.05% Sodium Azide.
Storage:	Shipped at 4°C. Upon delivery aliquot and store at -20°C. Avoid freeze / thaw cycles.
General Notes:	This monoclonal antibody is also available in a different formulation without BSA and Sodium Azide - Anti-CD10 Antibody [MME/1892] - BSA and Azide free (A252535).
Disclaimer:	This product is for research use only. It is not intended for diagnostic or therapeutic use.

Anti-CD10 Antibody [MME/1892] (A249355)

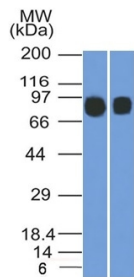
Images:



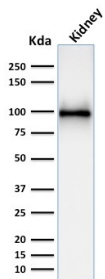
Immunohistochemical analysis of formalin-fixed, paraffin-embedded human kidney using Anti-CD10 Antibody [MME/1892].



SDS-PAGE analysis of Anti-CD10 Antibody [MME/1892] under non-reduced and reduced conditions; showing intact IgG and intact heavy and light chains, respectively. SDS-PAGE analysis confirms the integrity and purity of the antibody.



Western blot analysis of (Lane 1) Raji and (Lane 2) Ramos cell lysates using Anti-CD10 Antibody [MME/1892].



Western blot analysis of kidney tissue lysate using Anti-CD10 Antibody [MME/1892].