

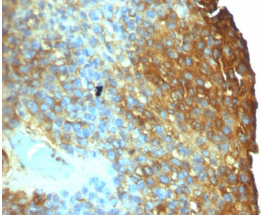
## Anti-Moesin Antibody [SPM562] (A249384)

### Specifications:

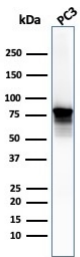
Name:	Anti-Moesin Antibody [SPM562]
Description:	Mouse monoclonal [SPM562] antibody to Moesin.
Applications:	WB, IF, IHC-P
Recommended Dilutions:	WB: 1-2 µg/ml, IF: 2-4 µg/ml, IHC-P: 1-2 µg/ml
Reactivity:	Human
Immunogen:	Moesin purified from uterus.
Host:	Mouse
Clonality:	Monoclonal
Clone ID:	SPM562
Isotype:	IgG1
Light Chains:	kappa
Conjugate:	Unconjugated
Purification:	Protein A/G chromatography.
Concentration:	200 µg/ml
Product Form:	Liquid
Formulation:	Supplied in 10mM Phosphate Buffered Saline with 0.05% BSA and 0.05% Sodium Azide.
Storage:	Shipped at 4°C. Upon delivery aliquot and store at -20°C. Avoid freeze / thaw cycles.
General Notes:	This monoclonal antibody is also available in a different formulation without BSA and Sodium Azide - Anti-Moesin Antibody [SPM562] - BSA and Azide free (A252564).
Disclaimer:	This product is for research use only. It is not intended for diagnostic or therapeutic use.

## Anti-Moesin Antibody [SPM562] (A249384)

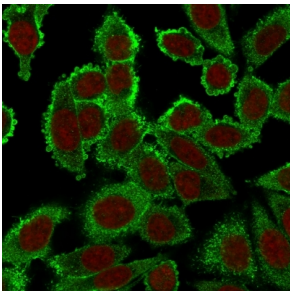
### Images:



Immunohistochemical analysis of formalin-fixed, paraffin-embedded human melanoma using Anti-Moesin Antibody [SPM562].



Western blot analysis of PC3 cell lysate using Anti-Moesin Antibody [SPM562].



Immunofluorescent analysis of PFA fixed HeLa cells stained with Anti-Moesin Antibody [SPM562] followed by Goat Anti-Mouse IgG (CF® 488) (Green). The nuclear counterstain is RedDot (Red).