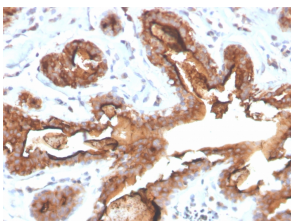


## Anti-MUC1 Antibody [MUC1/4416R] (A249417)

### Specifications:

Name:	Anti-MUC1 Antibody [MUC1/4416R]
Description:	Recombinant rabbit monoclonal [MUC1/4416R] antibody to MUC1.
Applications:	WB, IHC-P
Recommended Dilutions:	WB: 1-2 µg/ml, IHC-P: 1-2 µg/ml
Reactivity:	Human
Immunogen:	Recombinant full-length human MUC1 protein.
Host:	Rabbit
Clonality:	Monoclonal
Clone ID:	MUC1/4416R
Isotype:	IgG
Conjugate:	Unconjugated
Purification:	Protein A/G chromatography.
Concentration:	200 µg/ml
Product Form:	Liquid
Formulation:	Supplied in 10mM Phosphate Buffered Saline with 0.05% BSA and 0.05% Sodium Azide.
Storage:	Shipped at 4°C. Upon delivery aliquot and store at -20°C. Avoid freeze / thaw cycles.
General Notes:	This monoclonal antibody is also available in a different formulation without BSA and Sodium Azide - Anti-MUC1 Antibody [MUC1/4416R] - BSA and Azide free (A252597).
Disclaimer:	This product is for research use only. It is not intended for diagnostic or therapeutic use.

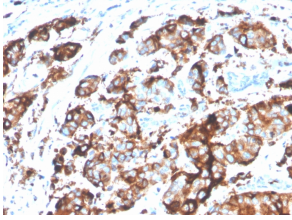
### Images:



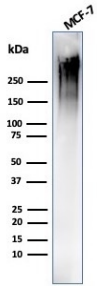
Immunohistochemical analysis of formalin-fixed, paraffin-embedded human breast carcinoma using Anti-MUC1 Antibody [MUC1/4416R].

# Anti-MUC1 Antibody [MUC1/4416R] (A249417)

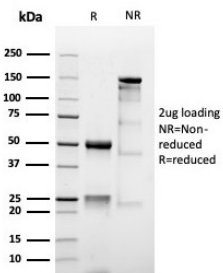
Images continued:



Immunohistochemical analysis of formalin-fixed, paraffin-embedded human breast carcinoma using Anti-MUC1 Antibody [MUC1/4416R].



Western blot analysis of MCF-7 cell lysate using Anti-MUC1 Antibody [MUC1/4416R].



SDS-PAGE analysis of Anti-MUC1 Antibody [MUC1/4416R] under non-reduced and reduced conditions; showing intact IgG and intact heavy and light chains, respectively. SDS-PAGE analysis confirms the integrity and purity of the antibody.