

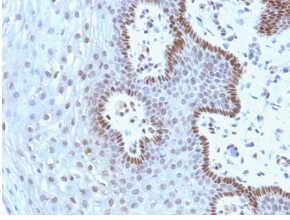
Anti-c-Myc Antibody [9E10.3] (A249451)

Specifications:

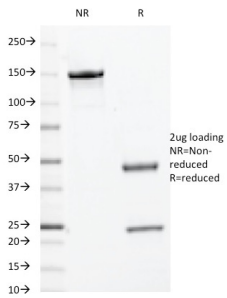
Name:	Anti-c-Myc Antibody [9E10.3]
Description:	Mouse monoclonal [9E10.3] antibody to c-Myc.
Specificity:	The epitope of this antibody spans between amino acids 410-419 (EQKLISEEDL) of human c-Myc protein. This antibody shows no cross-reaction with v-Myc.
Applications:	Flow Cytometry, IF, IHC-P
Recommended Dilutions:	Flow Cytometry: 1-2 µg/million cells, IF: 1-2 µg/ml, IHC-P: 1-2 µg/ml
Reactivity:	Human
Cross Reactivity:	This antibody does not cross react with Mouse, Rat, or Chicken.
Immunogen:	Synthetic peptide corresponding to amino acids 408-439 of human c-Myc, coupled to KLH.
Sequence:	AEEQKLISEEDLLRKRREQLKHKLEQLRNCSA
Host:	Mouse
Clonality:	Monoclonal
Clone ID:	9E10.3
Isotype:	IgG1
Conjugate:	Unconjugated
Purification:	Protein A/G chromatography.
Concentration:	200 µg/ml
Product Form:	Liquid
Formulation:	Supplied in 10mM Phosphate Buffered Saline with 0.05% BSA and 0.05% Sodium Azide.
Storage:	Shipped at 4°C. Upon delivery aliquot and store at -20°C. Avoid freeze / thaw cycles.
General Notes:	This monoclonal antibody is also available in a different formulation without BSA and Sodium Azide - Anti-c-Myc Antibody [9E10.3] - BSA and Azide free (A252631).
Disclaimer:	This product is for research use only. It is not intended for diagnostic or therapeutic use.

Anti-c-Myc Antibody [9E10.3] (A249451)

Images:



Immunohistochemical analysis of formalin-fixed, paraffin-embedded human cervical carcinoma using Anti-c-Myc Antibody [9E10.3].



SDS-PAGE analysis of Anti-c-Myc Antibody [9E10.3] under non-reduced and reduced conditions; showing intact IgG and intact heavy and light chains, respectively. SDS-PAGE analysis confirms the integrity and purity of the antibody.