

## Anti-Nucleolin Antibody [364-5 + NCL/902] (A249486)

### Specifications:

Name:	Anti-Nucleolin Antibody [364-5 + NCL/902]
Description:	Mouse monoclonal [364-5 + NCL/902] antibody to Nucleolin.
Specificity:	This antibody recognizes a protein of ~76kDa, which is identified as Nucleolin (NCL). It is the major nucleolar phosphoprotein of growing eukaryotic cells. NCL is located mainly in dense fibrillar regions of the nucleolus. It is found associated with intranucleolar chromatin and pre-ribosomal particles. Human NCL gene consists of 14 exons with 13 introns and spans approximately 11kb. It induces chromatin decondensation by binding to histone H1. It is thought to play a role in pre-rRNA transcription and ribosome assembly. This MAb can be used to stain the nucleoli in cell or tissue preparations and can be used as a marker of the nucleoli in subcellular fractions. It produces a speckled pattern in the nuclei of cells of normal and malignant cells and may be used to stain the nucleoli of cells in fixed or frozen tissue sections. It can be used with paraformaldehyde fixed frozen tissue or cell preparations and formalin fixed, paraffin-embedded tissue sections.
Applications:	Flow Cytometry, IF, WB, IHC-P
Recommended Dilutions:	Flow Cytometry: 1-2 µg/million cells, IF: 1-2 µg/ml, WB: 1-2 µg/ml, IHC-P: 1-2 µg/ml
Reactivity:	Human
Cross Reactivity:	This antibody does not cross react with Mouse, Rat, or Bovine.
Immunogen:	Clone 364-5: Lysate of SU-DHL-1 nuclei. Clone NCL/902: Recombinant human NCL protein.
Host:	Mouse
Clonality:	Oligoclonal
Clone ID:	364-5 + NCL/902
Isotype:	IgG1, kappa + IgG1, kappa
Conjugate:	Unconjugated
Purification:	Protein A/G chromatography.
Concentration:	200 µg/ml
Product Form:	Liquid
Formulation:	Supplied in 10mM Phosphate Buffered Saline with 0.05% BSA and 0.05% Sodium Azide.
Storage:	Shipped at 4°C. Upon delivery aliquot and store at -20°C. Avoid freeze / thaw cycles.

## Anti-Nucleolin Antibody [364-5 + NCL/902] (A249486)

### Specifications continued:

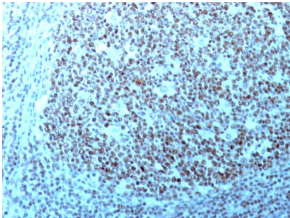
#### General Notes:

Please note, this product is an oligoclonal antibody; it is a cocktail of monoclonal antibodies that have been carefully selected. Oligoclonal antibodies not only have the specificity and batch-to-batch consistency of a monoclonal antibody, but they also have the advantage of the sensitivity of a polyclonal antibody due to their ability to recognize multiple epitopes on an antigen. This oligoclonal antibody is also available in a different formulation without BSA and Sodium Azide - Anti-Nucleolin Antibody [364-5 + NCL/902] - BSA and Azide free (A252666).

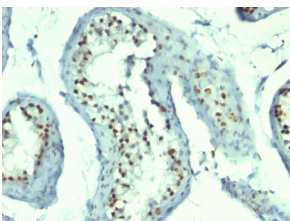
#### Disclaimer:

This product is for research use only. It is not intended for diagnostic or therapeutic use.

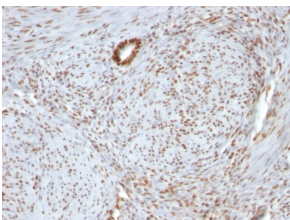
### Images:



Immunohistochemical analysis of formalin-fixed, paraffin-embedded human tonsil using Anti-Nucleolin Antibody [364-5 + NCL/902].



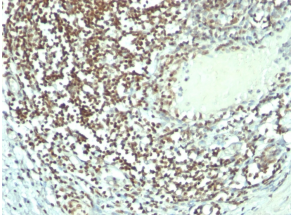
Immunohistochemical analysis of formalin-fixed, paraffin-embedded human testicular carcinoma using Anti-Nucleolin Antibody [364-5 + NCL/902].



Immunohistochemical analysis of formalin-fixed, paraffin-embedded human uterus using Anti-Nucleolin Antibody [364-5 + NCL/902].

## Anti-Nucleolin Antibody [364-5 + NCL/902] (A249486)

Images continued:



Immunohistochemical analysis of formalin-fixed, paraffin-embedded human bladder carcinoma using Anti-Nucleolin Antibody [364-5 + NCL/902].