

## Anti-PAX5 Antibody [rPAX5/2060] (A249561)

### Specifications:

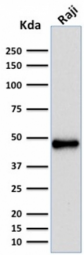
Name:	Anti-PAX5 Antibody [rPAX5/2060]
Description:	Recombinant mouse monoclonal [rPAX5/2060] antibody to PAX5.
Specificity:	The specificity of this monoclonal antibody to its intended target was validated by HuProt™ Array, containing more than 19,000 full-length human proteins. The PAX5 gene is a member of the paired box (PAX) family of transcription factors. The central feature of this gene family is a novel, highly conserved DNA-binding domain, known as the paired box. The PAX proteins are important regulators in early development, and alterations in the expression of their genes are thought to contribute to oncogenic transformation. The PAX5 gene encodes the B-cell lineage specific activator protein (BSAP) that is expressed at early, but not late stages of B-cell differentiation. Its expression has also been detected in developing CNS and testis; therefore, PAX5 gene product may not only play an important role in B-cell differentiation, but also in neural development and spermatogenesis.
Applications:	ELISA, WB
Recommended Dilutions:	WB: 1-2 µg/ml
Reactivity:	Human
Immunogen:	Recombinant full-length human PAX5 protein.
Host:	Mouse
Clonality:	Monoclonal
Clone ID:	rPAX5/2060
Isotype:	IgG1
Light Chains:	kappa
Conjugate:	Unconjugated
Purification:	Protein A/G chromatography.
Concentration:	200 µg/ml
Product Form:	Liquid
Formulation:	Supplied in 10mM Phosphate Buffered Saline with 0.05% BSA and 0.05% Sodium Azide.
Storage:	Shipped at 4°C. Upon delivery aliquot and store at -20°C. Avoid freeze / thaw cycles.
General Notes:	This monoclonal antibody is also available in a different formulation without BSA and Sodium Azide - Anti-PAX5 Antibody [rPAX5/2060] - BSA and Azide free (A252741).

# Anti-PAX5 Antibody [rPAX5/2060] (A249561)

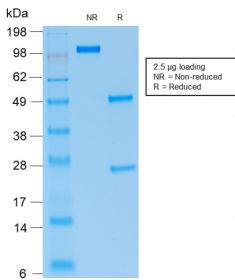
Specifications continued:

Disclaimer: This product is for research use only. It is not intended for diagnostic or therapeutic use.

Images:



Western blot analysis of human Raji cell lysate using Anti-PAX5 Antibody [rPAX5/2060].



SDS-PAGE analysis of Anti-PAX5 Antibody [rPAX5/2060] under non-reduced and reduced conditions; showing intact IgG and intact heavy and light chains, respectively. SDS-PAGE analysis confirms the integrity and purity of the antibody.