

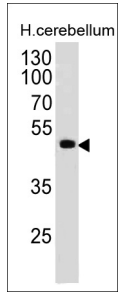
Anti-PAX6 Antibody [PAX6/498] (A249566)

Specifications:

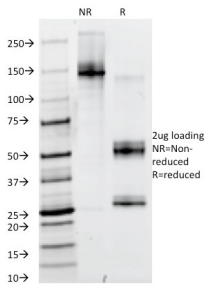
Name:	Anti-PAX6 Antibody [PAX6/498]
Description:	Mouse monoclonal [PAX6/498] antibody to PAX6.
Applications:	Flow Cytometry, IF, WB
Recommended Dilutions:	Flow Cytometry: 1-2 µg/million cells, IF: 1-2 µg/ml, WB: 1-2 µg/ml
Reactivity:	Human, Mouse, Rat, Chicken
Immunogen:	Recombinant fragment, amino acids 1-300, of human PAX6 protein.
Host:	Mouse
Clonality:	Monoclonal
Clone ID:	PAX6/498
Isotype:	IgG1
Light Chains:	kappa
Conjugate:	Unconjugated
Purification:	Protein A/G chromatography.
Concentration:	200 µg/ml
Product Form:	Liquid
Formulation:	Supplied in 10mM Phosphate Buffered Saline with 0.05% BSA and 0.05% Sodium Azide.
Storage:	Shipped at 4°C. Upon delivery aliquot and store at -20°C. Avoid freeze / thaw cycles.
General Notes:	This monoclonal antibody is also available in a different formulation without BSA and Sodium Azide - Anti-PAX6 Antibody [PAX6/498] - BSA and Azide free (A252746).
Disclaimer:	This product is for research use only. It is not intended for diagnostic or therapeutic use.

Anti-PAX6 Antibody [PAX6/498] (A249566)

Images:



Western blot analysis of human cerebellum lysate using Anti-PAX6 Antibody [PAX6/498].



SDS-PAGE analysis of Anti-PAX6 Antibody [PAX6/498] under non-reduced and reduced conditions; showing intact IgG and intact heavy and light chains, respectively. SDS-PAGE analysis confirms the integrity and purity of the antibody.