

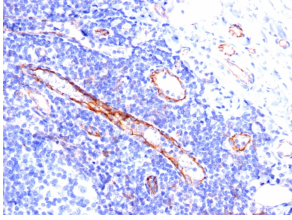
## Anti-CD31 Antibody [C31.3] (A249601)

### Specifications:

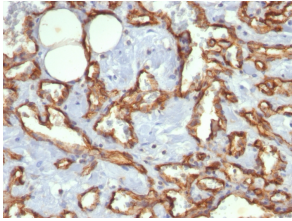
Name:	Anti-CD31 Antibody [C31.3]
Description:	Mouse monoclonal [C31.3] antibody to CD31.
Applications:	Flow Cytometry, WB, IF, IHC-P
Recommended Dilutions:	Flow Cytometry: 1-2 µg/million cells, WB: 1-2 µg/ml, IF: 1-2 µg/ml, IHC-P: 1-2 µg/ml
Reactivity:	Human
Cross Reactivity:	This antibody weekly cross reacts with Rat.
Immunogen:	Recombinant full-length human CD31 protein.
Host:	Mouse
Clonality:	Monoclonal
Clone ID:	C31.3
Isotype:	IgG1
Light Chains:	kappa
Conjugate:	Unconjugated
Purification:	Protein A/G chromatography.
Concentration:	200 µg/ml
Product Form:	Liquid
Formulation:	Supplied in 10mM Phosphate Buffered Saline with 0.05% BSA and 0.05% Sodium Azide.
Storage:	Shipped at 4°C. Upon delivery aliquot and store at -20°C. Avoid freeze / thaw cycles.
General Notes:	This monoclonal antibody is also available in a different formulation without BSA and Sodium Azide - Anti-CD31 Antibody [C31.3] - BSA and Azide free (A252781).
Disclaimer:	This product is for research use only. It is not intended for diagnostic or therapeutic use.

# Anti-CD31 Antibody [C31.3] (A249601)

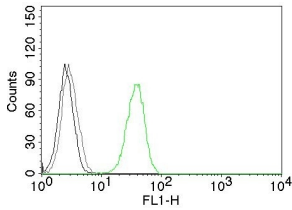
## Images:



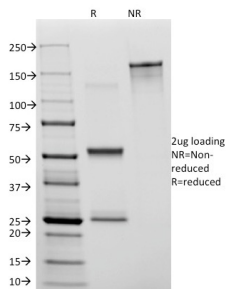
Immunohistochemical analysis of formalin-fixed, paraffin-embedded human tonsil using Anti-CD31 Antibody [C31.3].



Immunohistochemical analysis of formalin-fixed, paraffin-embedded human angiosarcoma using Anti-CD31 Antibody [C31.3].



Flow cytometric analysis of Jurkat cells labeling CD31 with Anti-CD31 Antibody [C31.3] (AF488) (Green) (Red). Cells alone (Black). Isotype Control (Gray).



SDS-PAGE analysis of Anti-CD31 Antibody [C31.3] under non-reduced and reduced conditions; showing intact IgG and intact heavy and light chains, respectively. SDS-PAGE analysis confirms the integrity and purity of the antibody.